

YOUR GUIDE TO ARRANGING A FUNERAL

PRODUCTS • SERVICES • PRICES



Robert, Chris, Andrew & Michael Lodge
7th Generation of the Lodge Family

Lodge
BROTHERS 1780
the family you can turn to

TRUSTED FUNERAL DIRECTORS FOR OVER 240 YEARS

THE FAMILY YOU CAN TURN TO...

When a death occurs in your family, you need the help and advice of a local, independent Funeral Director. Lodge Brothers is the family you can turn to.

Eight generations of our family have been helping local families in their time of need and for over 240 years we have been providing funerals, both modern and traditional, with care and compassion. During these years our reputation for delivering a professional and personal service of the highest quality has been built on trust and recommendation.

TRUST THE LODGE FAMILY DIFFERENCE

Unlike many Funeral Directors, who were formerly owned by local families but who have now joined major national groups, Lodge Brothers is proud to say that it is an Employee Owned business. Please allow me to introduce my family who are still actively involved in the business on a day to day basis.



Robert Lodge, Chairman



Robert Lodge



Andrew Lodge



Chris Lodge



Michael Lodge

❖ THE LODGE FAMILY HISTORY	Page 04
TRUST THE LODGE FAMILY DIFFERENCE	Page 05
❖ LODGE BROTHERS LEGAL SERVICES	Page 06
❖ FUNERAL CHOICES	Page 08
- Funeral Services & Ceremonies	Page 08
- Our 'Traditional' Funeral Choices	Page 09
- Standardised Price List	Page 12
- Complementary & Sundry Costs	Page 13
❖ COFFINS & CASKETS	Page 14
❖ OUR FLORAL COLLECTION	Page 22
❖ ORDER OF SERVICE & FUNERAL STATIONERY	Page 39
❖ LIMOUSINES & HEARSEs	Page 48
❖ ASHES & KEEPSAKES	Page 54
❖ MEMORIAL MASONRY	Page 60
❖ FOLLOWING A DEATH	Page 62
- Procedures Following a Death	Page 64
- After a Death	Page 66
- Tell Us Once Service	Page 67
- The Coroner	Page 67
- If There Is A Will	Page 67
- Probate/Letters of Administration	Page 67
- Transplants	Page 67
❖ ARRANGING THE FUNERAL	Page 68
- Transfer & Care of the Deceased	Page 68
- Embalming	Page 68
- Funeral Services & Ceremonies	Page 69
- The Traditional Funeral	Page 71
- The Dignified Basic Funeral	Page 72
- Standard Unattended Funeral	Page 72
- D.I.Y. Funerals	Page 73
- Eulogies	Page 73
- Press Notices	Page 73
- Flowers & Donations	Page 74
- Music for the Service	Page 74
- Special Arrangements	Page 74
- Disbursements & Additional Expenses	Page 75
- Funeral Finance & Funeral Safe	Page 75
- Other Money Matters	Page 76
- Life Ledger	Page 76
❖ USEFUL INFORMATION	Page 77
- Checklist of Other Duties	Page 77
- Bereavement Register	Page 77
- Bereavement Help & Counselling	Page 78
- Charitable Donations	Page 79
- Online Memorials	Page 79
- Useful Third Party Contacts	Page 80
- Associated Organisations	Page 82
- Payment Policy and Terms & Conditions	Page 83

THE LODGE FAMILY HISTORY



THE FAMILY YOU CAN TURN TO



JOHN LODGE

1780 - 1ST GENERATION:

James Lodge starts the family funeral business in Feltham.

1825 - 2ND GENERATION:

James' son William takes over the running of the business.

1870 - 3RD GENERATION:

William passes the business on to his sons John and William. John runs the carpentry and funeral business whilst William runs the building business and farms on Spring Farm, now the site of our Head Office in Feltham.

1910 - 4TH GENERATION:

John passes the carpentry and funeral business to his son Stanley, who later inherits the building business from his uncle William.

1941 - 5TH GENERATION:

Stanley dies and leaves the business to his sons George and William. Shortly after the war George sells his share of the business to William.

1967 - 6TH GENERATION:

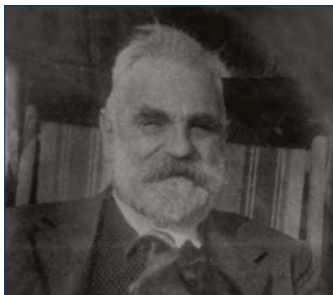
William retires and his 3 sons Stanley, William and John take over the business.

2005 - 7TH GENERATION:

John, the last of the three brothers retires, handing the company over to the 7th generation of brothers, sisters and cousins (Michael, Chris, Janet, Beverley, Robert and Andrew).

TODAY:

Following the retirement of Beverley and Janet in 2020 and with Andrew stepping down as a Director of the Company at the end of 2023, the Lodge Family created an Employee Ownership Trust in 2024. This ensures that the Lodge legacy and values continue in the safe hands of those who work in the business to provide the highest care for the families who engage our services. Robert, Michael and Chris continue to work in the company as Directors.



STANLEY LODGE



WILLIAM LODGE



WILLIAM, STANLEY AND JOHN LODGE



MICHAEL, CHRIS, JANET, BEVERLEY, ROBERT AND ANDREW LODGE



THE 7TH GENERATION OF THE LODGE FAMILY
CHRIS, ANDREW, MICHAEL AND ROBERT LODGE

TRUST THE LODGE FAMILY DIFFERENCE



We know that organising a funeral can seem like a daunting task, especially when we find ourselves having to make difficult decisions at a time of loss and bereavement, when we feel least able to manage.

You can trust Lodge Brothers to guide you through every step of the journey. We take great pride in being able to offer a 24-hour service, 365 days a year, providing advice on what needs to be done and by whom.

With over 240 years of experience, we have encountered nearly every situation. Our guide has been prepared to give you an outline of the actions required by executors and others when arranging a funeral, as well as giving you information on the wide range of services we offer.

Everyone is an individual, and there are many options available to help you create a meaningful, memorable and personal funeral day that honours the deceased.

If you prefer, our Funeral Arranger can visit you at home to discuss the arrangements.



THE PROFESSIONAL SERVICES WE OFFER

- ✓ Advice on how and where to register the death.
- ✓ Liaising with H.M. Coroner as required.
- ✓ Help with completing all the required statutory documentation.
- ✓ Collection and distribution of documents to the relevant authorities.
- ✓ Making all necessary arrangements for the funeral service (from your home or our office).
- ✓ Providing guidance on the various options available.
- ✓ Provision of a written estimate of all charges relating to the funeral service.
- ✓ Liaising with all appropriate third parties and paying on your behalf all the necessary fees and disbursements.
- ✓ Help with the placing of newspaper announcements.
- ✓ Advice given on Orders of Service.
- ✓ Ordering of floral tributes.
- ✓ Receipt and care of floral tributes prior to the funeral and transporting them to the funeral service.
- ✓ Receipt and listing of charitable donations and forwarding monies collected to your chosen charity.
- ✓ Facility for online donations and In Memoriam website.
- ✓ On-going assistance and support as required, both before and after the funeral.
- ✓ Complimentary creation of A Funeral Notice to share with family and friends by SMS text message.
- ✓ Advice and guidance on memorials; materials, design and lettering.
- ✓ Advice on Probate, Wills and Lasting Power of Attorney from our team of solicitors at Lodge Brothers Legal Services.

LODGE BROTHERS LEGAL SERVICES



Lodge Brothers Legal Services was created specifically to assist our Clients further with accessible and affordable legal advice.

Our own SRA regulated Solicitors and Legal Executives, headed by Sophie Andrews, specialise in matters of Probate Wills and Lasting Powers of Attorney.

For a free no obligation quote, please call Sophie or a member of her team on 020 3540 6658.



Sophie Andrews
Director & Solicitor

PROBATE

When a family member or loved one dies, dealing with estate administration is often the last thing on a person's mind. Our efficient, professional and above all personal service makes your life easier at such a distressing time. The probate process can be divided into two different stages. The first is to establish the value of the estate, complete the Inheritance Tax forms, pay any IHT due and obtain the Grant of Probate. The second is to deal with the administration of the estate once the Grant of Probate has been issued. This includes collecting in the assets, paying liabilities and distributing funds to beneficiaries.

OUR PRE GRANT PROBATE SERVICES

We offer 2 levels of service to suit your requirements. All our fees are fixed and agreed in advance.



Starting from £1000 +VAT (£1200 inc. VAT) plus disbursements:

- ✓ Executors responsible for registering death with all asset holders
- ✓ Executors establish the assets and liabilities at date of death
- ✓ We will complete the probate papers, Inheritance Tax forms and apply for the Grant of Probate



Starting from £1500 +VAT (£1800 inc. VAT) plus disbursements:

This is our most complete service which will relieve you of the heavy burden of dealing with the estate when your thoughts are elsewhere. It ensures that probate is obtained quickly and efficiently.

- ✓ We will register the death certificate with the asset holders
- ✓ We will ascertain the date of death assets and liabilities of the estate
- ✓ We will complete all the probate papers, Inheritance Tax forms and apply for the Grant of Probate

OUR POST GRANT SERVICE

Once the Grant of Probate is received we can agree a further fixed fee with you to collect in the assets of the estate, settle the liabilities and distribute funds to the beneficiaries.



WILLS

Only 30% of people in this country have made a Will. This is because we do not like thinking about death and we are unaware of the importance of having a professionally drafted Will. Once a person overcomes their fears and makes a Will they find that it is a positive step that gives them great peace of mind. They are reassured that their affairs are in order. If you die without a Will you die “intestate” meaning the intestacy laws set out which of your family members inherit and the amount. Your spouse will not necessarily inherit all of your estate and if you are unmarried your partner will not inherit anything.

A legally valid Will, carefully prepared by a qualified expert Solicitor, will ensure that:

- You provide for your loved ones in the way you wish
- You choose the Executors who will administer your estate
- You choose the Guardians for your minor children
- You can take steps to reduce the Inheritance Tax payable

You can also choose to appoint Lodge Brothers Legal Services as the Executors of your Will. We will ensure that your estate is dealt with promptly and efficiently so that your loved ones do not have the responsibility but do receive their inheritance as quickly as possible.

Simple Will Service without a client meeting:

Single Will starting from £325 +VAT (£390 inc. VAT)

Mirror Wills starting from £500 +VAT (£600 inc. VAT)

Bespoke Will Service includes a meeting with a qualified Solicitor or Legal Executive to discuss your requirements in person:

Single Will starting from £500 +VAT (£600 inc. VAT)

Mirror Wills starting from £750 +VAT (£900 inc. VAT)

LASTING POWERS OF ATTORNEY

A Lasting Power of Attorney (“LPA”) is a legal document that lets you appoint another person, the attorney, to make financial and/or welfare decisions on your behalf, if, in the future, you become unable or unwilling to make your own decisions.

There are 2 types of Lasting Powers of Attorney:

Property and Financial Affairs – this gives your Attorney authority to deal with your property and finances. This can be used whether or not you lack mental capacity. Your Attorney will be able to manage your bank account, pay your bills, collect your pension and sell your home.

Health and Welfare – this allows your Attorney to make welfare and health care decisions for you, including decisions about life sustaining treatment. This can only be used if you lack mental capacity to make your own decisions, your Attorney can make decisions about your daily routine, medical care and care home.

If an LPA is not in place when mental capacity is lost, an application must be made to the Court of Protection for a Deputy to be appointed. This is a complicated and costly process, and the Court of Protection will be involved on an ongoing basis. We can advise on making LPAs, prepare the documents and deal with registration at the Office of the Public Guardian (OPG).

All our fees are fixed and agreed in advance starting from £475 +VAT (£570 inc. VAT) plus OPG registration fee of £82.

Our professional legal services offer peace of mind to you and your family. Please contact Sophie Andrews, our Head of Legal Services or one of her team on **020 3540 6658**. Alternatively email legalservices@lodgebrothers.co.uk or visit www.lodgebrotherslegalservices.co.uk.

FUNERAL SERVICES & CEREMONIES



“Over the years, our reputation for delivering a professional and personal service of the highest quality, has been built on trust and recommendation.”

ROBERT LODGE, Chairman

CHOOSING A CEREMONY THAT IS RIGHT FOR YOU

We understand that when you have lost a loved one, the responsibility of arranging a funeral can sometimes be emotionally overwhelming. Our Funeral Arrangers are trained to the highest levels - they are able to guide you through the legal requirements and relieve you of all the practical arrangements for the funeral, so you need not worry. The funeral ceremony is the last chance to say goodbye - we will help you create a meaningful service that truly reflects the life of the deceased. Whether that be a traditional funeral with a black hearse and limousines, a natural woodland burial, or something more contemporary like a colourful funeral with a bespoke printed coffin or a double-decker bus hearse.

DIVERSITY

We offer our services to all communities, regardless of race, ethnic heritage or religious beliefs. If you would like a religious ceremony, we will work with you to fulfil the requirements of your faith, offering advice on the special facilities we have available, for example for the ritual washing and dressing of your loved one. We will liaise with your chosen Priest or Minister to make all the necessary arrangements. If you would prefer a non-religious ceremony, we can arrange for a Humanist or Civil Celebrant to officiate at the service, or a committal without any form of remembrance service can also be arranged.


BRING FAMILY AND FRIENDS TOGETHER. SHARE FUNERAL DAY DETAILS IN ONE SIMPLE MESSAGE.

The emotional task of letting everyone know of your loss and communicating the funeral day details can be a huge challenge. A Funeral Notice is a really simple way of ensuring that everyone your loved one knew can be informed about their passing and it gives them the chance to pay their respects, including those the family may not have been in direct contact with.



Rated 5.0 Excellent

As of 31/03/24

 **afuneralnotice.com**
Bringing families and friends together, with one simple message

OUR 'TRADITIONAL' FUNERAL CHOICES



FUNERAL PACKAGE	PREMIUM TRADITIONAL	TRADITIONAL	SIMPLE TRADITIONAL
<p>'THE LODGE BROTHERS DIFFERENCE' NO HIDDEN EXTRAS</p> <ul style="list-style-type: none"> We do not make an additional charge for bringing deceased into our care after normal working hours We do not make an additional charge for supplying additional bearers at the funeral 	Fully personalised service, allowing for the funeral procession to travel from a residence to the place of worship, crematorium or place of burial.	Fully personalised service allowing for the funeral procession to travel from the residence to the place of worship, crematorium or place of burial.	Fully personalised service for the funeral to travel direct to the crematorium or cemetery.
Time allowed for the funeral	4 hours	3 hours	2 hours
Provision of professional services and making all the arrangements	✓	✓	✓
Advice on the certification and registration of the death and related documentation	✓	✓	✓
Coffin / Casket See following pages for additional choices	Malvern, Bespoke, Willow Teardrop	Sherwood	Sherwood
Conveyance of the deceased into our care	✓	✓	✓
Care of the deceased	✓	✓	✓
Embalming and use of the Chapel of Rest (during working hours)	✓	✓	✓
Church service followed by burial or cremation*	✓	✓	X
Funeral procession from a residence to the funeral location	✓	✓	X
Choice of date and time of funeral	✓	✓	✓
1. Limousine - £265.00	One Limousine included	Option to add (additional fee)	X
2. 3ft floral tribute - £143.00	✓	Option to purchase	Option to purchase
3. Up to 16 pages order of service (Up to 100 copies), including free glass framed photo - £200.00	✓	Option to purchase	Option to purchase
4. Book of Remembrance: Non-Personalised - £20.00** Personalised - £44.00***	Personalised version included	Option to purchase	Option to purchase
5. Funeral Memories Box: Non-Personalised - £24.00** Personalised - £50.00***	Personalised version included	Option to purchase	Option to purchase
6. 30 packs of Forget-me-not In Memory seeds - £85.00	✓	Option to purchase	Option to purchase
Video and webcast of funeral service (Crematorium only, if available)	Option to purchase	Option to purchase	Option to purchase
Complimentary text funeral notice (RRP £19.99)	✓	✓	✓
Complimentary 10-minute telephone consultation with Lodge Brothers Legal Services	✓	✓	✓
PRICE (From)	£5,230 A saving of £363	£4,300	£4,200

* Additional fees may be charged by the Church or Crematorium

** Non-Personalised Book of Remembrance and Memories Box Set - £38.00

*** Personalised Book of Remembrance and Memories Box Set - £75.00

All prices are inclusive of VAT at 20%.

THE PREMIUM TRADITIONAL PACKAGE SELECTION



MALVERN

A polished veneered oak casket with a raised lid, fitted with four pairs of brass handles, three pairs of wreath holders and an inscription plate.

Interior lined with a quilted casket suite to include pillow and overlay. Interior colour choice: White, pink, blue and cream.

BESPOKE

If you prefer a more personal tribute you can choose from a range of designs, or with professional assistance, create your own which is entirely unique, truly reflecting the life and personality of your loved one.

Designs are placed on an MDF coffin fitted with a white mattress, pillow and frill. The exterior is fitted with handles and wreath holders.



Many design options available



Floral garland available

WILLOW TEARDROP

A teardrop shaped willow coffin with six woven bulrush handles and an engraved bamboo plaque. Lined with unbleached cotton calico lining and shroud.

Maximum weight: 25 stone

Maximum height: 6'6"

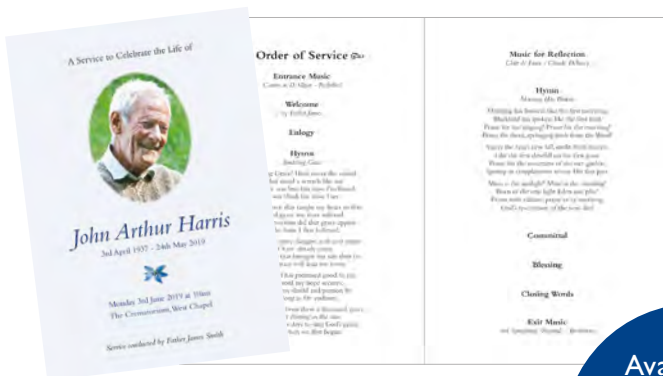
THE PREMIUM TRADITIONAL PACKAGE SELECTION



Toughened glass framed photo of your loved one



Premium 3ft Floral Tribute

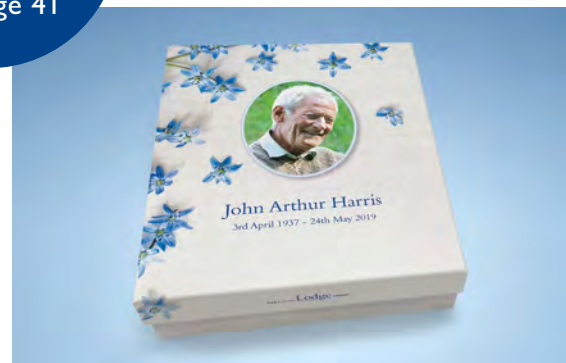


Personalised Order of Service



Personalised Book of Remembrance

Available in a wide range of matching designs - See page 41



Personalised Memories Box

STANDARDISED PRICE LIST



All funeral directors are legally required to publish this Price List for a standardised set of products and services. This is to help you think through your options and make choices, and to let you compare prices between different funeral directors (because prices can vary).

ATTENDED FUNERAL (Funeral Director's charges only) £4,075

This is a funeral where family and friends have a ceremony, event or service for the deceased person at the same time as they attend their burial or cremation

Taking care of all necessary legal and administrative arrangements £2,695

Collecting and transporting the deceased person from the place of death (normally within 15 miles of the funeral director's premises) into the funeral director's care £325

Care of the deceased person before the funeral in appropriate facilities £200

The deceased person will be kept at both the funeral director's branch premises and at other non-branch premises

Providing the Sherwood elm veneered coffin fitted with three pairs of brass plastic handles and an inscription plate £425

Viewing of the deceased person for family and friends, by appointment with the funeral director (where viewing is requested by the customer) £100

At a date and time you agree with the funeral director, taking the deceased person direct to the agreed cemetery or crematorium (normally within 20 miles of the funeral director's premises) in a hearse or other appropriate vehicle £330

UNATTENDED FUNERAL

This is a funeral where family and friends may choose to have a ceremony, event or service for the deceased person, but they do not attend the burial or cremation itself

Burial (funeral director's charges only) Not Offered

Cremation (funeral director's charges plus the cremation fee) £2,515

FEES YOU MUST PAY

For an Attended or Unattended burial funeral, the **burial fee**¹

In this local area, the typical cost of the burial fee for local residents is: £850 - £2,475

For a new grave, you will also need to pay for the plot; for an existing grave with a memorial in place, you may need to pay a removal/replacement fee. In addition, the cemetery may charge a number of other fees.

For an Attended cremation funeral, the **cremation fee**²

In this local area, the typical cost of a cremation for local residents is: £620 - £1,290

Please discuss any **specific religious, belief-based and/or cultural requirements** that you have with the funeral director

ADDITIONAL FUNERAL DIRECTOR PRODUCTS AND SERVICES

This funeral director may be able to supply a range of optional, additional products and services, or to arrange (on your behalf) for a third party to supply them. Examples include:

Additional mileage (price per mile) £2.50

Additional transfers of the deceased person's body (eg to their home, to a place of worship etc) (price per transfer) £260

Collection and delivery of ashes £52

Embalming £125

Funeral officiant (eg celebrant, minister of religion etc) Prices on request

Services supplied outside of normal office hours Prices on request

The funeral director can give you a full list of what they can supply. They are likely to charge for these additional products and services, so you may choose to take care of some arrangements without their involvement, or you can use a different supplier.

¹ This fee (which is sometimes called the interment fee) is the charge made for digging and closing a new grave, or for reopening and closing an existing grave.

² In England, Wales and Northern Ireland, you will usually need to pay for the doctor's fee as well. This is the charge for the doctor to sign the Medical Certificates for Cremation. Information correct at time of press. Subject to imminent Government change, pending notification.

COMPLEMENTARY & SUNDRY COSTS



NB: The following products and services are not available with the Dignified Basic Funeral and Standard Unattended Funeral, please refer to page 72 for more details.

SPECIAL TRANSPORT ARRANGEMENTS

Removals outside normal working hours - No additional charge

Reception of coffin into a local church or residence to remain there for a period before the funeral service:

Cost of hearse, conductor and bearers: Before 4.30pm - £415.00 Evenings, weekends and bank holidays - £545.00

Coffin taken home by ambulance: Normal hours - £260.00 Evenings, weekends and bank holidays - £390.00

Split funerals (where there is a break between the funeral service and the committal, a fee is charged to cover additional man hours and use of funeral vehicles over two different time periods): On the same day - £400.00 On separate days - £550.00

Funerals outside the normal geographical areas we cover, or with a special route: We may have to charge an additional hourly rate to cover the additional time for our funeral staff outside the hours allowed in our funeral packages. Our funeral arranger will calculate the charge once we fully understand your requirements for the funeral.

Hourly rate during normal working hours - £64.00 Outside normal working hours - £96.00

Transporting deceased to another Funeral Directors outside the normal geographical areas we cover: Occasionally we are asked to transport the deceased to and from another Funeral Director outside of our locality in order for the funeral to take place. Mileage charge for transportation - £2.50 per mile.

VEHICLE HIRE

For our Vehicle Hire prices please refer to Page 53.

PRESS NOTICES

We can place press notices for you, a small handling fee may be charged - price dependent on size of obituary.

National newspapers: Average - £415.00 **Local newspapers:** Average - £130.00

MEMORIALS

The cost normally includes removing and replacing. Standard Lawn memorials include refixing at a subsequent date, to current NAMM recommended code of working practice.

Standard lawn - £360.00

Standard Kerbset Single - £480.00

Standard Kerbset Single (removed from burial ground as requested by burial authority and stored for 1 year) - £800.00

Double Space Kerbset (Double space memorials may incur higher charges) - from £960.00

If the Burial Authority insist a kerbset memorial is removed from the cemetery and stored off site until the memorial can be re-instated on the grave, please note there is a risk of damage if the memorial has to be dismantled. We will not be held liable for any damage caused should the memorial be dismantled due to either its method of construction or the Burial Authority's instruction. Additional cost for memorials larger than a Standard Kerbset will be priced individually.

MISCELLANEOUS

Collection and delivery of ashes within a 10 mile radius of one of our branches - £52.00

Collection and delivery of ashes outside a 10 mile radius of one of our branches - Price on application

Standard oak wooden cross (inc VAT) - £126.00 **Small oak or white wooden cross** (inc VAT) - £48.00

Saturday funerals - £815.00* **Sunday funerals** - £1,315.00* * Guide Price - depending on location and duration of service

Additional man-hours charged at hourly rate: Normal working hours - £64.00 Outside normal working hours - £96.00

Zinc lining for all coffins and caskets - £505.00

COFFINS & CASKETS



Choosing the appropriate coffin or casket is an important aspect of the funeral. It can be a difficult and emotional task and time should be given to reflect on the individual's life and how it should be represented. Perhaps they were a traditional person or passionate about the environment, or maybe they were very fond of their garden or were a life-long supporter of a football or sporting club.

We have shown on the following pages an extensive range of options and we hope that, with our guidance, this will help you with the bereavement process. If there is a specific coffin or casket you would like that would help to express your loved one's life and it is not displayed in the following pages, please tell us and we will help you find something that reflects their character. Some slight variations in colour and finish may occur in products made from natural materials.

Some burial authorities may charge an additional 'casket fee', where they treat the coffin design as a casket, due to its shape. The package prices below are all inclusive of the cost of the coffin. All prices are inclusive of VAT at 20%.

TRADITIONAL COFFINS & CASKETS

OXFORD

An oak veneered coffin with raised lid, fitted with three pairs of brass plastic handles and an inscription plate.

Interior lined with a taffeta frill and a gown to match.
Interior colour choice: White, pink, blue and cream.



£585

Funeral Choices: Premium Traditional N/A Traditional £4,460.00 Simple Traditional £4,360.00

SHERWOOD

An elm veneered coffin, fitted with three pairs of brass plastic handles and an inscription plate.

Interior lined with a taffeta frill and gown to match. Interior colour choice: White, pink, blue and cream.



£425

Funeral Choices: Premium Traditional N/A Traditional £4,300.00 Simple Traditional £4,200.00

LONGDON

A polished solid mahogany casket with frame panelled sides, ends and a double raised lid. Fitted with brass metal extended bar handles, 'T' ends, wreath holders and inscription plate. (For cremation the Gothic/Cotswold style handles will be fitted).

Interior lined with a quilted casket suite to include pillow and overlay. Interior colour choice: White, pink, blue and cream.



£1,425

Funeral Choices: Premium Traditional £5,705.00 Traditional £5,300.00 Simple Traditional £5,200.00

COFFINS & CASKETS

SALISBURY

A polished mahogany veneered MDF coffin with router panels fitted with three pairs of brass plastic handles and an inscription plate.

Interior lined with a taffeta frill and gown to match. Interior colour choice: White, pink, blue and cream.



£585

Funeral Choices: Premium Traditional N/A Traditional £4,460.00 Simple Traditional £4,360.00

KILKENNY – LAST SUPPER

A polished oak coffin with plywood base, router panelled sides and a raised Lid. 'Last Supper' carving in unique grotto side and end panels. Fitted with two pairs of brass plastic bar handles, two pairs of wreath holders, a crucifix and inscription plate.

Interior lined with white satin side sheets and frill (only suitable when the deceased is wearing their own clothes).



£1,295

Funeral Choices: Premium Traditional £5,575.00 Traditional £5,170.00 Simple Traditional £5,070.00

MALVERN

A polished veneered oak casket with a raised lid, fitted with four pairs of brass plastic handles, three pairs of wreath holders and an inscription plate.

Interior lined with a quilted casket suite to include pillow and overlay. Interior colour choice: White, pink, blue and cream.



£950

Funeral Choices: Premium Traditional £5,230.00 Traditional £4,825.00 Simple Traditional £4,725.00

COTSWOLD

A polished solid mahogany coffin with plywood base, router panelled sides, ends and raised lid. Fitted with three pairs of brass plastic bar handles, a pair of 'T' ends, two pairs of wreath holders and an inscription plate.

Interior lined with a satin coffin suite including pillow and overlay to match. Interior colour choice: White, pink, blue and cream.



£1,295

Funeral Choices: Premium Traditional £5,575.00 Traditional £5,170.00 Simple Traditional £5,070.00

COFFINS & CASKETS



ITALIAN LAST SUPPER

A solid larch timber Italian style coffin, polished mahogany finish with 'Last Supper' carving. Fitted with two pairs of plastic brass effect bar handles and inscription plate.

Interior lined with white satin side sheets and frill, as per the Kilkenny Coffin (only suitable when the deceased is dressed in their own clothes). Not suitable for cremation.



£1,425

Funeral Choices: Premium Traditional £5,705.00 Traditional £5,300.00 Simple Traditional £5,200.00

COLOURED COFFIN

An MDF coffin suitable for spraying in either a white, pink, green, red or blue matt finish. Fitted with three pairs of plastic handles and inscription plate.

Interior lined with a taffeta frill and gown to match.
Interior colour choice: White, pink, blue and cream.



£685

Funeral Choices: Premium Traditional N/A Traditional £4,560.00 Simple Traditional £4,460.00

ASTON

A polished solid oak casket with frame panelled sides, ends and a double raised lid. Fitted with brassed metal extended bar handles, 'T' ends, wreath holders and inscription plate. (For cremation the Gothic/Cotswold style handles will be fitted).

Interior lined with a quilted casket suite to include pillow and overlay. Interior colour choice: White, pink, blue and cream.



£1,425

Funeral Choices: Premium Traditional £5,705.00 Traditional £5,300.00 Simple Traditional £5,200.00

GOTHIC

A polished solid oak coffin with plywood base, router panelled sides, ends and raised lid. Fitted with three pairs of brassed plastic bar handles, a pair of 'T' ends, two pairs of wreath holders and an inscription plate.

Interior lined with a satin coffin suite including pillow, overlay and gown to match. Interior colour choice: White, pink, blue and cream.



£1,295

Funeral Choices: Premium Traditional £5,575.00 Traditional £5,170.00 Simple Traditional £5,070.00

COFFINS & CASKETS



NATURAL COFFINS

Hand crafted from natural materials, the following range of coffins offers a dignified and unique alternative to traditional wooden coffins. Made from 100% natural biodegradable materials, they are designed with beauty and strength in mind. Slight variations in colour may occur due to the nature of the materials used. Cremated remains urns are also available in these ranges, please see pages 54-55. This is just a small selection of the choices available. Please ask your Funeral Arranger for more details if you would like to see further options.

*Please note, some burial authorities may charge an additional 'casket fee', where they treat the coffin design as a casket, due to its shape.

TRADITIONAL WILLOW

Traditional coffin in natural buff willow, inlaid with green bands. Fitted with six woven willow handles and lined with an unbleached natural calico cotton lining. (Only suitable when the deceased is dressed in their own clothes)

Maximum weight: 25 stone.

* Flowers and garland sold separately see page 38.



Funeral Choices: Premium Traditional £5,465.00 Traditional £5,060.00 Simple Traditional £4,960.00

WILLOW TEARDROP

A teardrop shaped willow coffin with six woven bulrush handles and an engraved bamboo plaque. Lined with unbleached cotton calico lining and shroud. (Only suitable when the deceased is dressed in their own clothes)

Maximum weight: 25 stone. Maximum height: 6'8".



Funeral Choices: Premium Traditional £5,230.00 Traditional £4,825.00 Simple Traditional £4,725.00

CARDBOARD

A buff cardboard coffin with rope handles. Due to the nature of this material the inside cannot be lined so it is only suitable when the deceased is dressed in their own clothes.

Maximum weight: 25 stone. Maximum height: 6'5".



Funeral Choices: Premium Traditional N/A Traditional £4,400.00 Simple Traditional £4,300.00

COFFINS & CASKETS



CURVED-END CANE

Curved end cane coffin with rope handles and a wooden engraved name plate. Fitted with a natural cotton liner, pillow and cover sheet. (Only suitable when the deceased is dressed in their own clothes)

Maximum weight: 25 stone. Maximum height: 6'4".



£540

Funeral Choices: Premium Traditional N/A Traditional £4,415.00 Simple Traditional £4,315.00

BAMBOO TEARDROP

A teardrop shaped bamboo coffin with bamboo finish handles and an engraved bamboo plaque. Lined with unbleached cotton calico lining and shroud. (Only suitable when the deceased is dressed in their own clothes)

Maximum weight: 25 stone. Maximum height: 6'8".



£540

Funeral Choices: Premium Traditional N/A Traditional £4,415.00 Simple Traditional £4,315.00

COFFIN INTERIORS

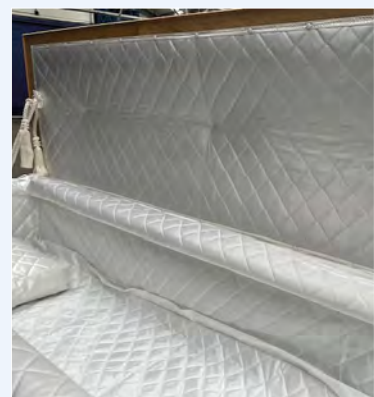
We offer a choice of coffin interiors, please ask your Funeral Arranger for more details.



Veneered Coffins



Solid Wood Coffins



Casket Suite

COFFINS & CASKETS



BESPOKE COFFINS

If you prefer a more personal tribute you can choose from a range of designs, or with professional assistance, create your own which is entirely unique, truly reflecting the life and personality of your loved one. Designs are placed on an MDF coffin fitted with a white mattress and pillow and colour frill of your choice. The exterior is fitted with handles and wreath holders. (Only suitable when deceased is wearing own clothes).

SPARKLE RED ROSES COFFIN

Tiny Swarovski crystals are hand applied to add an instant sparkle and can be used to personalise and highlight names and other details. Including handles.

Price on application.



SPITFIRE

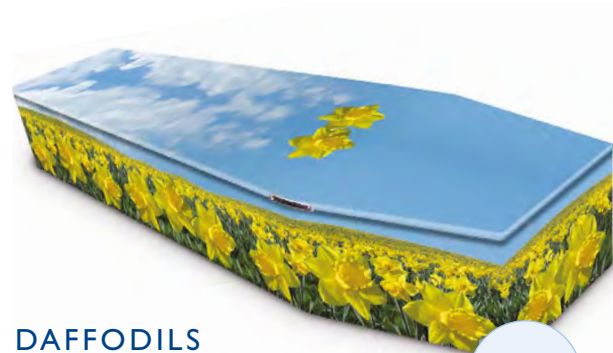
Funeral Choices:

Premium Traditional: £5,230.00

Traditional: £4,825.00

Simple Traditional £4,725.00

£950



DAFFODILS

Funeral Choices:

Premium Traditional: £5,230.00

Traditional: £4,825.00

Simple Traditional £4,725.00

£950



BRITISH BIRDS

Funeral Choices:

Premium Traditional: £5,230.00

Traditional: £4,825.00

Simple Traditional £4,725.00

£950



GLITTER

Funeral Choices:

Premium Traditional: £5,230.00

Traditional: £4,825.00

Simple Traditional £4,725.00

£950

COFFINS & CASKETS



BESPOKE COFFINS

NIGHT MUSIC

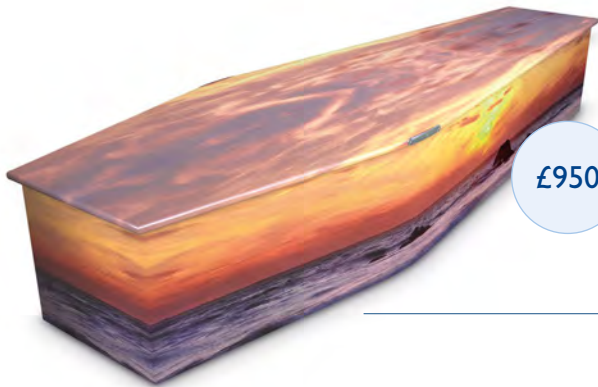
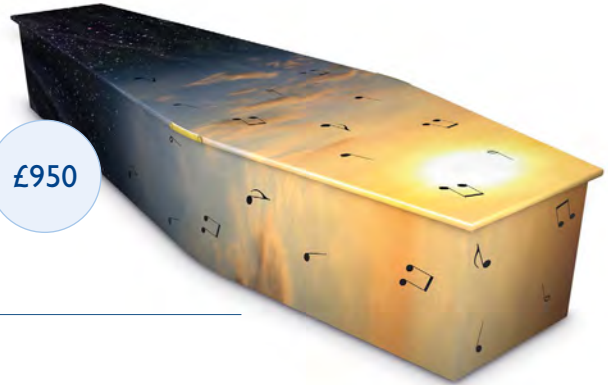
Funeral Choices:

Premium Traditional: £5,230.00

Traditional: £4,825.00

Simple Traditional £4,725.00

£950



£950

AT SEA

Funeral Choices:

Premium Traditional: £5,230.00

Traditional: £4,825.00

Simple Traditional £4,725.00

MOONLIGHT FOREST

Funeral Choices:

Premium Traditional: £5,230.00

Traditional: £4,825.00

Simple Traditional £4,725.00

£950



£950

MY ANGEL

Funeral Choices:

Premium Traditional: £5,230.00

Traditional: £4,825.00

Simple Traditional £4,725.00

COFFINS & CASKETS



AMERICAN CASKETS

Here is a small selection of American style caskets. Please ask our branch staff for more designs if required. The caskets are ordered by request. Availability and designs may vary from time to time, and they are only suitable for burial. **Please note, not all cemeteries and churchyards allow these and may not permit steel caskets for burial.** A range of steel caskets is available on request but is subject to approval from the burial authority.

ALL PRICES AVAILABLE ON APPLICATION

PIETA POPLAR

A solid poplar casket with an American cherry polished finish, fitted with a tan crepe interior.



HARVEST OAK

A solid oak casket with a shaded flax satin finish, fitted with a tan crepe interior with wheat features.

BORDEAUX CHERRY

A solid cherry casket with a rich garnet, prestige polished finish, fitted with an ivory basket weave interior.



HEAVENLY WHITE

A solid poplar casket with a high gloss white finish, fitted with a white crepe interior with gold coloured hardware.



OUR FLORAL COLLECTION



Lodge Brothers will be pleased to take care of all the arrangements for floral tributes. The following pages offer a comprehensive selection of sprays, sheafs, wreaths and bouquets, all available in a choice of colours and flowers depending on seasonal availability. Our florist would also be pleased to create a floral tribute to reflect the career, hobby or characteristic of the deceased.

Please ask your Funeral Arranger for details on how to order. **For a more detailed view, all of our designs are featured on our website, which also provides a simple online ordering service.**

Inclusive of VAT at 20%.

If an individual flower is out of season or unavailable we reserve the right to replace it with a suitable alternative.



FLORAL CARDS

Our floral cards are available in a range of designs. Blank cards are also available. These are provided free of charge with all floral tribute orders.

OUR FLORAL COLLECTION



COFFIN SPRAYS

CLASSIC WHITE COFFIN SPRAY

3ft approximate size - FL001-3: £143.00

6ft approximate size - FL001-6: £270.00



From
£143



From
£145

MIXED FLOWERS COFFIN SPRAY

3ft approximate size - FL002-3: £145.00

6ft approximate size - FL002-6: £272.00

OUR FLORAL COLLECTION



BASKETS & BOUQUETS

£80



BASKET ARRANGEMENT

14" approximate size - FL003-14

BASKET ARRANGEMENT

14" approximate size - FL004-14

£77



BASKET ARRANGEMENT

18" approximate size - FL005-18

£114



BASKET ARRANGEMENT

24" approximate size - FL006-24

£144



OUR FLORAL COLLECTION



£6

SINGLE RED ROSE

FL007-1

SPRAY OF FIVE ROSES

FL008-5



£25

POSY ARRANGEMENTS & TIED SHEAFS

£56



POSY ARRANGEMENT

14" approximate size - FL009-14

POSY ARRANGEMENT

14" approximate size - FL010-14

£73



OUR FLORAL COLLECTION



£76



POSY ARRANGEMENT

14" approximate size - FL011-14

TIED SHEAF

3ft approximate size - FL012-3

£66



TIED SHEAF

3ft approximate size - FL013-3

£78



£103

TIED SHEAF

3ft approximate size - FL014-3



OUR FLORAL COLLECTION



SINGLE ENDED SPRAYS

SINGLE ENDED SPRAY

3ft approximate size - FL015-3



£96

SINGLE ENDED SPRAY

3ft approximate size - FL016-3



£110

OUR FLORAL COLLECTION



DOUBLE ENDED SPRAYS

DOUBLE ENDED SPRAY

2ft approximate size - FL017-2



£72

£111

DOUBLE ENDED SPRAY

3ft approximate size - FL018-3



DOUBLE ENDED SPRAY

4ft approximate size - FL019-4



£155

OUR FLORAL COLLECTION



WREATHS & CROSSES



From
£157

BASED CROSS

4ft approximate size - FL020-04: £157.00

5ft approximate size - FL020-05: £194.00

PASTEL WREATH

14" approximate size - FL021-14: £145.00

16" approximate size - FL021-16: £172.00



From
£145

£137



STAR TRIBUTE

24" approximate size - FL022-24

OUR FLORAL COLLECTION



From
£158

WOODLAND CROSS

4ft approximate size - FL023-04: £158.00

5ft approximate size - FL023-05: £185.00

CHRYSANTHEMUM BASED WREATH

14" approximate size - FL024-14: £130.00

16" approximate size - FL024-16: £150.00



From
£130



£140

LOOSE OPEN HEART

17" approximate size - FL050-17

OUR FLORAL COLLECTION



HEART TRIBUTES



From
£129

CHRYSANTHEMUM BASED HEART

15" approximate size - FL025-15: £129.00

18" approximate size - FL025-18: £150.00

LOOSE BASED HEART

15" approximate size - FL026-15: £106.00

18" approximate size - FL026-18: £126.00



From
£106



£147

OPEN CHRYSANTHEMUM BASED HEART

15" approximate size - FL027-15

OUR FLORAL COLLECTION



POSY PADS & PILLOWS

From
£103



CHRYSANTHEMUM BASED POSY PAD

12" approximate size - FL028-12: £103.00

14" approximate size - FL028-14: £122.00

CHRYSANTHEMUM BASED PILLOW

18" approximate size - FL029-18: £172.00

21" approximate size - FL029-21: £185.00

From
£172



From
£91



POSY PAD

12" approximate size - FL030-12: £91.00

16" approximate size - FL030-16: £126.00

OUR FLORAL COLLECTION



SPECIALIST TRIBUTES



£193

CHRYSANTHEMUM BASED GATES OF HEAVEN

One size - FL031

RAINBOW WREATH

14" approximate size - FL032-14: £177.00

16" approximate size - FL032-16: £217.00



From
£177

SPECIALIST TRIBUTES MADE TO ORDER

Our florist would be happy to create a floral tribute to reflect the career, hobby or personality of your loved one.
Please ask for details.

OUR FLORAL COLLECTION

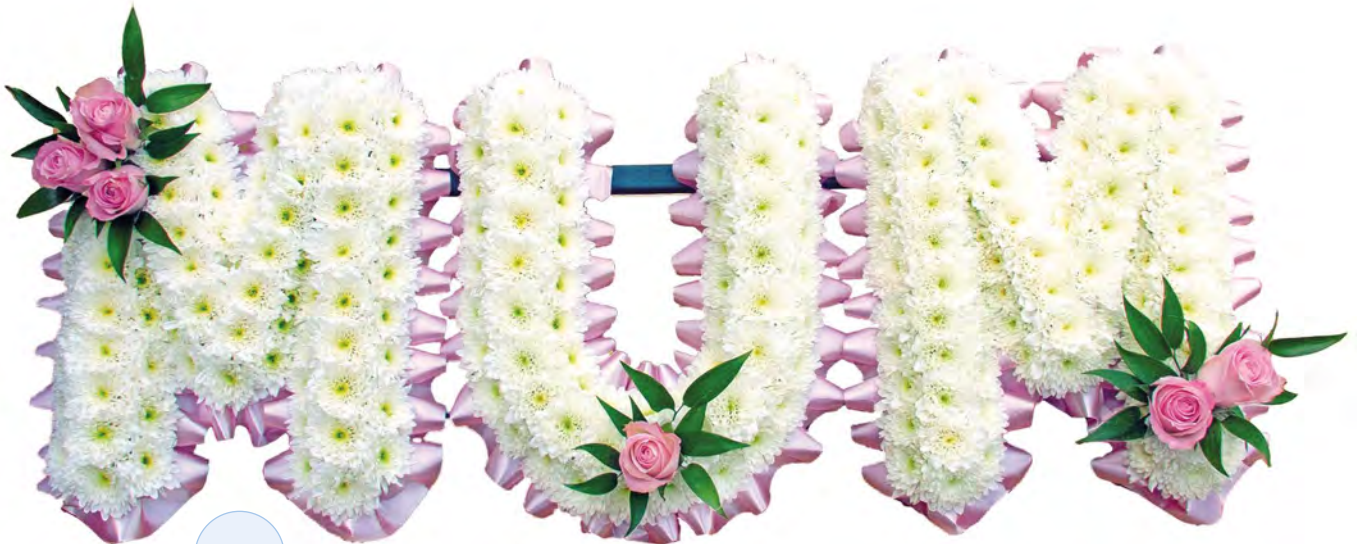


SPECIALIST LETTERING



CHRYSANTHEMUM BASED LETTERING

Available in your choice of name and colour selection - FL034-1: £62.00 per letter



£186

CHRYSANTHEMUM 'MUM' OR 'DAD' LETTERING

FL034-3: £186



£186

OUR FLORAL COLLECTION



THE SUPREME COLLECTION



OPEN BASED HEART

15" approximate size - FL035-15



WREATH

14" approximate size - FL036-14



PILLOW

18" approximate size - FL037-18

OUR FLORAL COLLECTION



£100



DOUBLE OPEN HEART

14" approximate size - FL038-14

MIXED ROSE HEART

15" approximate size - FL039-15

£280



From
£165



BROKEN HEART

14" approximate size - FL040-14: £165.00

18" approximate size - FL040-18: £245.00

OUR FLORAL COLLECTION



£300



COFFIN & CASKET GARLAND

Mixed flowers - FL041

The coffin pictured is for display purposes only and is not included with the garland but is available to purchase separately, please see page 17 for details.

TROPICAL COFFIN SPRAY

3ft approximate size - FL042-3



£182

RED ROSE COFFIN SPRAY

6ft approximate size - FL043-6



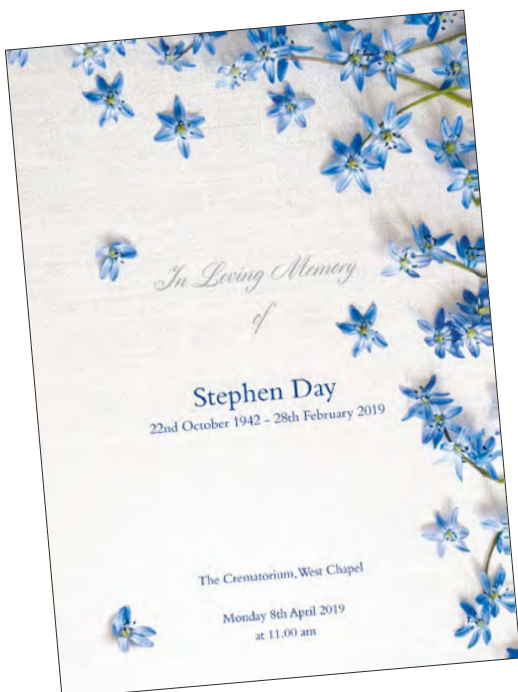
£319

ORDER OF SERVICE



ORDER OF
SERVICE &
STATIONERY

FORGET-ME-NOTS



20% discount on
Memory Seeds
& Memory Pins
available when
purchased with an
Order of Service

Shown on the following pages is a selection of our Order of Service designs. All our designs can be customised in a range of colours, with or without a photo of your loved one. Please speak to one of our Funeral Arrangers who will be happy to assist you in customising your chosen design.

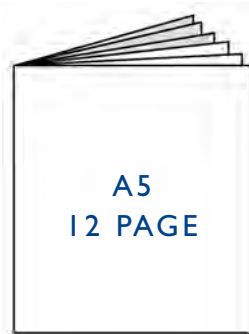
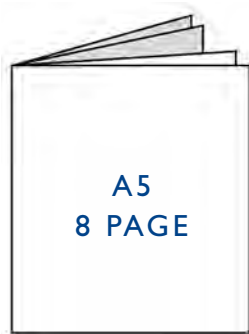
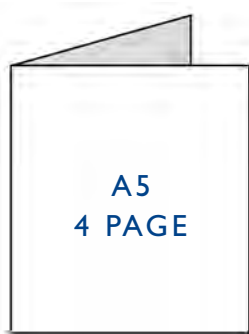
All designs are available with matching Funeral Stationery, please see page 45 for details.

ORDER OF SERVICE



An Order of Service not only assists in the smooth running of the funeral, but is also a unique and special keepsake for all your family and friends to remember your loved one. When sent to those unable to attend the service it will give them the chance to privately say goodbye.

Your Order of Service could include a hymn, photographs, a reading, or anything the deceased would like to have been remembered for. Please feel free to discuss your requirements with our Funeral Arrangers who offer a bespoke service. They will be pleased to guide you through the process and show you the styles that are available.



All Order of Service prices include up to 5 photos and a maximum of 16 pages.
Additional photos / images are charged at £5 extra per image.

IN BRANCH SERVICE

QUANTITY	20	25	30	40	50	75	100	125	150	175	200	200+
PRICE	£120	£125	£130	£145	£150	£175	£200	£230	£260	£290	£300	£30 per qty of 25

ORDER OF SERVICE



CLASSIC ROSE

Available in the colours below:



Red



Cream



Pink



Yellow



Peach



CONTEMPORARY PORTRAIT

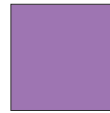
Also available in the colours below:



Pink



Blue



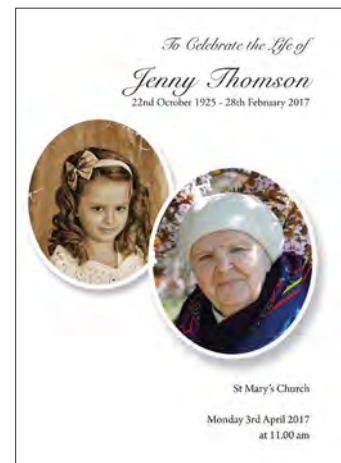
Lillac



Burgandy



Matching Funeral Stationery available for all designs

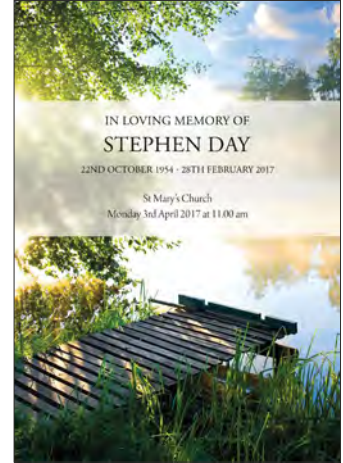


MEMORIES

ORDER OF SERVICE



MISTY RIVER



Matching Funeral Stationery available for all designs

SWIRL BORDER

Also available in the colours below:



Red



Blue



Pink



Teal



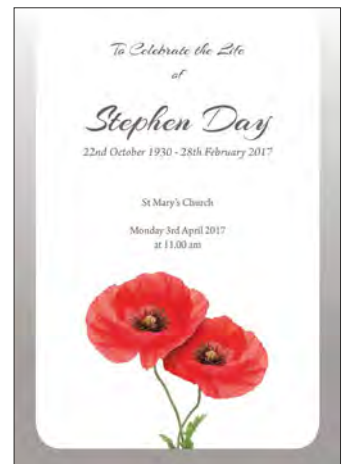
Orange



Lilac



SIMPLY POPPIES



ORDER OF SERVICE



FLORAL PATTERN

Available in the colours below:



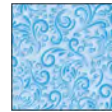
Lilac



Teal



Red



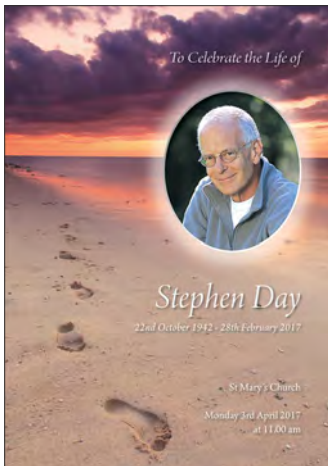
Blue



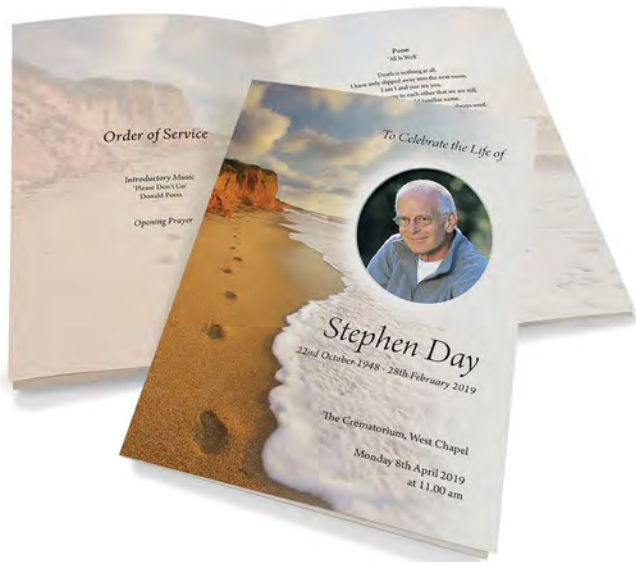
Pink



Orange



BEACH FOOTPRINTS



20% discount on
Memory Seeds
& Memory Pins
available when
purchased with an
Order of Service

BUTTERFLIES

Also available in the colours below:



Pink



Blue



Peach



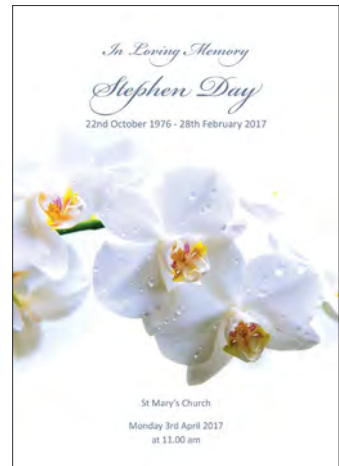
Teal



ORDER OF SERVICE



SOFT ORCHID



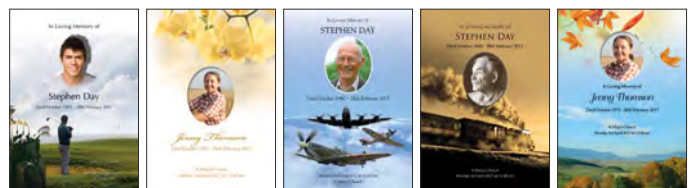
MODERN FLORAL

This design is very flexible and you can choose a different background and foliage colour if desired.



BESPOKE

Send us your own images or design ideas and we can create a truly personalised Order of Service at no extra cost.



FUNERAL STATIONERY



BOOK OF REMEMBRANCE

Featuring a high quality cover with and thick inside pages for mourners to leave their messages and memories. Includes matching presentation box and sleeve.

Non-Personalised - £20.00 Personalised - £44.00

MEMORIES BOX

A personalised hard cover ring binder to preserve an order of service, list of attendees, list of donors, lock of hair, heartfelt messages and floral cards. Supplied in a matching presentation box.

Non-Personalised - £24.00 Personalised - £50.00



MEMORIES BOX SETS

Comprising of a Book of Remembrance and a Memories Box, both personalised to remember your loved one.

Non-Personalised Set - £38.00 Personalised Set - £75.00

PERSONALISED BOOKMARKS & MEMORIAL CARDS

Minimum order 20, in 10s thereafter.

Up to 50 - £2.65 each

60-100 - £2.35 each

100+ - £2.10 each



ATTENDANCE CARDS

QUANTITY	20	30	40	50	60	70	80	90	100	100+
PRICE	£30.00	£32.50	£36.00	£39.50	£43.00	£46.50	£50.00	£53.50	£57.00	£3.50 per 10

IN MEMORY PINS & SEEDS

IN MEMORY PINS

Our In Memory Pins are available in many different designs and are a perfect way to unite the congregation. After the funeral, the pins can continue to be worn as keepsake jewellery. Each pin comes in an individual, elegant drawstring voile pouch. Your Funeral Arranger will be happy to show you the full range of pins available.

Buy with Order of Service for a 20% discount



QUANTITY	10	20	30	40	50	60	70	80	80+
PRICE	£30	£60	£85	£110	£135	£160	£185	£205	£25 per qty of 10
DISCOUNTED PRICE*	£24	£48	£68	£88	£108	£128	£148	£164	£20 per qty of 10

IN MEMORY SEEDS

Available in brown Kraft card or white card packs with a choice of flowers:

- Forget-me-not
- Poppy
- Sunflower
- Pansy
- Daisy
- Wildflower

Buy with Order of Service for a 20% discount



QUANTITY	10	20	30	40	50	60	70	80	80+
PRICE	£30	£60	£85	£110	£135	£160	£185	£205	£25 per qty of 10
DISCOUNTED PRICE*	£24	£48	£68	£88	£108	£128	£148	£164	£20 per qty of 10

* When ordered with an Order of Service. All prices are inclusive of VAT at 20%.

MEMORY KEEPSAKES



TOUGHENED GLASS PHOTO FRAME

A 9x11 inch frame featuring a favourite image of your loved one.

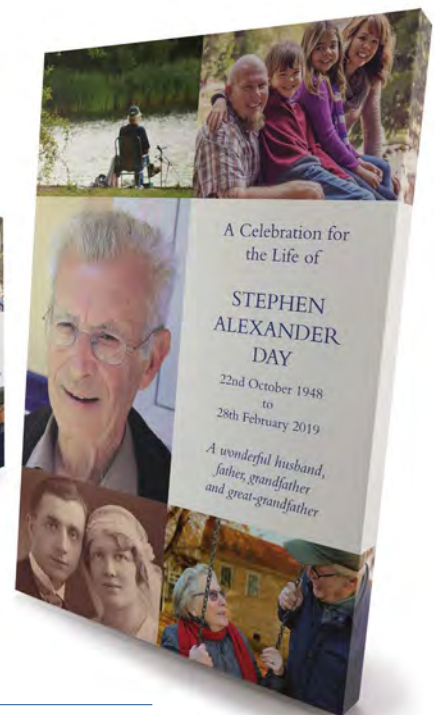
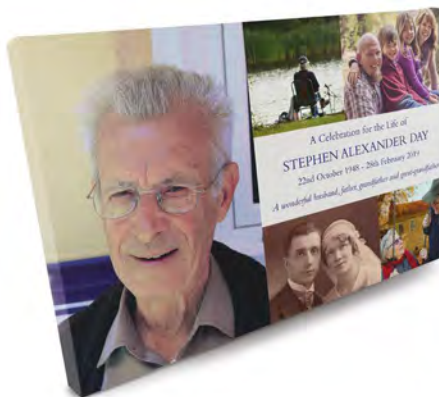
£18 each, or free of charge as part of our Premium Service

Included with the Premium Order of Service

MEMORIAL MONTAGE CANVAS

A long lasting tastful keepsake, our Memorial Montage Canvases are an excellent way to honour and remember your loved one. Each 20x30 inch free standing canvas can feature up to 5 photos along with memorial text, produced in a high quality colour print.

£80 each



KEEPSAKE CARDS

Minimum order 20, in 10s thereafter.

Up to 50 - £2.65 each 60-100 - £2.35 each

100+ - £2.10 each







Andrew & Robert Lodge with their
eco-friendly hybrid funeral fleet

LIMOUSINES & HEARSES



Lodge Brothers have a fleet of eco-friendly, modern black limousines and hearses.

If you would prefer something a little different, your Funeral Arranger will be happy to discuss the options and prices available.

These may include:

- Motorcycle hearse
- Vintage hearse
- Silver Rolls Royce cortege
- Victorian mourning carriage
- Horse drawn hearse

All prices are inclusive of VAT at 20%.



£265

STANDARD LIMOUSINE



£330

STANDARD HEARSE



POA

ROLLS-ROYCE BLACK
PHANTOM VI LIMOUSINE



POA

ROLLS ROYCE SILVER
PHANTOM SALOON

LIMOUSINES & HEARSES



POA

1936 ROLLS ROYCE HEARSE



POA

TRIUMPH THUNDERBIRD



POA

LANDROVER DEFENDER
HEARSE IN SILVER



POA

VOLVO F88 1960'S
LORRY AS HEARSE



POA

ROUTEMASTER RML
DOUBLE DECKER BUS

LIMOUSINES & HEARSES



POA

VW CAMPER SPLIT
SCREEN HEARSE IN SILVER



POA

MORRIS MINOR HEARSE
FINISHED IN BLACK



£1,475

BLACK CARRIAGE WITH
PAIR OF BLACK HORSES



£1,475

WHITE CARRIAGE WITH
PAIR OF BLACK HORSES



£2,200

BLACK CARRIAGE WITH
TEAM OF BLACK HORSES



£1,475

WHITE CARRIAGE WITH
PAIR OF GREY HORSES

LIMOUSINES & HEARSES



SPECIAL TRANSPORT ARRANGEMENTS

Conveyance of your loved one outside normal working hours No additional charge

Reception of coffin into a local church or residence to remain there for a period before the funeral service (except Direct Cremation):

Cost of hearse, conductor and bearers:

- Before 4.30pm £415.00
- Evenings, weekends and bank holidays £545.00

Coffin taken home by ambulance:

- Normal hours £260.00
- Evenings, weekends and bank holidays £390.00

Split funerals (where there is a break between the funeral service and the committal, a fee is charged to cover additional man hours and use of funeral vehicles over two different time periods):

- On the same day £400.00
- On separate days £550.00

VEHICLE HIRE

Limousines - 1st, 2nd and 3rd vehicle £265.00

(Subsequent vehicles costed individually)

Floral hearse £420.00

Transportation of funeral staff when vehicles not required £235.00

Hire of vehicles after normal working hours, plus 30%.

ASHES CASKETS & URNS



After the cremation, you may wish to take time to decide on a final resting place for your loved one's ashes. Your decision will affect the choice of urn or casket for the ashes.

If you decide to scatter the ashes, then a scatter tube may be more appropriate and we offer a range of attractive designs.

Other options include burying the ashes. Having a special place to visit, where you can see the name of a loved one on a memorial, can provide comfort as well as leaving a legacy for future generations. We have a range of urns and caskets in a variety of materials suitable for this purpose.

Some slight variations in colour and finish may occur in products made from natural materials.



£140

AUTUMN LEAVES

Biodegradable handcrafted paper with water soluble bag enclosed.

8.5" x 8.5" x 5.25"



£125

PURITY EARTHURN

Biodegradable handcrafted paper with water soluble bag enclosed.

6.75" x 9.5" x 5.5"



£125

UNITY EARTHURN

Biodegradable handcrafted paper with water soluble bag enclosed.

7" x 8" x 5"



£135

REFLECT EARTHURN

Silk bag with biodegradable handcrafted paper urn enclosed.

10" x 8.5" x 4"

ASHES CASKETS & URNS



£156

WILLOW CASKET

A handwoven ashes casket using willow with cotton bag. Name plates available on request.
Single: 8"x 8"x 8" Double: 12"x 10"x 7.5"



£120

SEAGRASS CASKET

A handwoven ashes casket using natural seagrass with cotton bag. Name plates available on request.
12"x 9"x 8"



£180

SELBY

Solid mahogany with engraved brass plate available.
12"x 9"x 6"



£150

ARUN

Solid Oak with engraved brass plate.
Double (2 sets of ashes) - £200.00
Single: 12"x 9"x 6" Double: 16"x 11"x 6"



£216

POPPIES CASKET

A bespoke ashes casket with your own design or from our range. Name plates available on request.
11"x 9"x 6"



£216

FISHING CASKET

A bespoke ashes casket with your own design or from our range. Name plates available on request.
11"x 9"x 6"

ASHES CASKETS & URNS



SALT URN

Handcrafted from Himalayan Rock Salt.
10" x 8" (approx)



GREY MARBLE URN

A solid grey marble urn.
Large: 11" x 8" Small: 3.5" x 2"



UNIVERSAL

Spun metal urn.
8" x 8"



BRUSHED PEWTER COLLECTION

Full sized brushed pewter urn, pewter keepsake and pewter heart.
Urn: 10" x 6" Keepsake: 2.8" x 2.8" Heart: 3" x 2.8"



CRYSTAL HEART KEEPSAKE

Holds small amount of cremated remains or lock of hair.
2.4" x 2.4"



SWAROVSKI CRYSTAL TEALIGHT KEEPSAKE URN

Holds small amount of cremated remains or lock of hair.
4.4" x 3.8"

ASHES CASKETS & URNS



Bespoke designs available from £85

£41



ASCENDING DOVE SCATTER TUBE

Also available in:

Medium size - £34.00 Miniature size - £26.00

Large: 14.6" x 6" x 5" Medium: 10" x 4" Miniature: 5.6" x 3"

OCEAN SUNSET SCATTER TUBE

Also available in:

Medium size - £34.00 Miniature size - £26.00

Large: 14.6" x 6" x 5" Medium: 10" x 4" Miniature: 5.6" x 3"

£41



£41



FORGET-ME-NOT SCATTER TUBE

Also available in:

Medium size - £34.00 Miniature size - £26.00

Large: 14.6" x 6" x 5" Medium: 10" x 4" Miniature: 5.6" x 3"

The charge for delivery to a local cemetery and making arrangements for the burial of ashes £150.00

For only making the arrangements for the burial of ashes £80.00

To supply an ashes marker (wooden with engraved brassed plate) £48.00

NB: In the case of ashes being repatriated, there may be additional charges such as Consulate fees and freight charges, for which an estimate can be provided.

All prices are inclusive of VAT at 20%.

In the event of any of the urns and caskets being unavailable we reserve the right to replace it with a similar style alternative.

KEEPSAKE JEWELLERY



Turning ashes into keepsakes is an increasingly recognised and popular way to remember a loved one and create a lasting tribute to them. Wearing the ashes of someone dear to you means you can keep them close at all times. This beautiful reminder of somebody special can be passed through the family to help their memory live on.

Lodge Brothers now offer an extensive range of keepsake jewellery for men and women, along with a selection of memorial gifts and cremation artworks for the home, all hand made to order by skilled crafts people. Cremated remains are treated with the utmost respect and reverence throughout the process.

Personalised jewellery pieces incorporating ashes into the design include rings, bracelets, charms, cufflinks and pendants and most items can be engraved on request with a special message.

Please visit www.lodgebrothers.co.uk for more styles and designs.

All prices on application



ETERNITY PINK HEART RING

Shown in 9ct Gold setting, also available in 9ct White Gold and Sterling Silver. Crystallure heart available in 7 colours.



TRILOGY RING

Available in a Sterling Silver or 9ct Gold band, with a choice of 7 Crystallure colours.



TITANIUM RING WITH TWIN GROOVES

A flat profile Titanium ring with a satin-finish centre. This item can be engraved on the inner surface.



HEART INLAID STOPPER CHARM

For attaching to a Snake-Chain style bracelets (not included). Available in 7 Crystallure colours.



CHAIN BRACELET WITH ASHES DISC

Sterling silver bracelet featuring a disc of imprinted ashes, and a birth crystal of your choice. Available in Gold.



SILVER MEMORIAL TORQUE BANGLE

Handmade sterling silver with ash imprint. Option with engraving up to 16 characters.

KEEPSAKE JEWELLERY



9CT GOLD MEMORIAL PENDANT

An oblong memorial pendant on a 16", 18", or 20" trace chain. Engraving up to 30 characters.



TEARDROP ANGEL WING PENDANT

A sterling silver angel wing on a Crystarosin inlaid teardrop pendant with snake chain. Available in 10 colours.



SILVER TEARDROP INLAID PENDANT

Crystarosin inlaid sterling silver teardrop-shaped pendant with snake chain. Available in 10 colours.



CRYSTALLURE DOG TAG PENDANT

Silver dog tag penndant with Crystallure inlay. Available in 3 colours. Engraving up to 10 characters.



HEART MEMORY CAPSULE PENDANT

Sterling silver containing a sealable glass capsule on a 16", 18", or 20" snake chain. Engraving 20 characters.



SCROLL ENGRAVED MEMORIAL CYLINDER

Sterling silver hollow space locket to hold a small amount of ashes. Engraving up to 20 characters.



SILVER SQUARE EARRINGS

Handmade sterling silver square stud earrings with ash imprint.



CULTURED PEARL SILVER EARRINGS

Sterling silver stud earrings imprinted with ashes and set with cultured pearls.



9CT GOLD DISC MEMORIAL CUFFLINKS

Memorial cufflinks imprinted with your loved ones ashes. Also available in Silver

MEMORIAL MASONRY



For 240 years and eight generations, Lodge Brothers Funeral Directors and Memorial Stonemasons have been helping the local community in their time of need, providing funerals and memorials, both modern and traditional, with care and compassion. Our reputation for delivering a professional and personal service of the highest quality, has been built on trust and recommendation.

The tradition of using a memorial to commemorate the life of a loved-one goes back to the beginning of civilisation and is seen as a visible link between the departed and those left behind. **Every memorial is individually made and can be personalised through changes in design.**



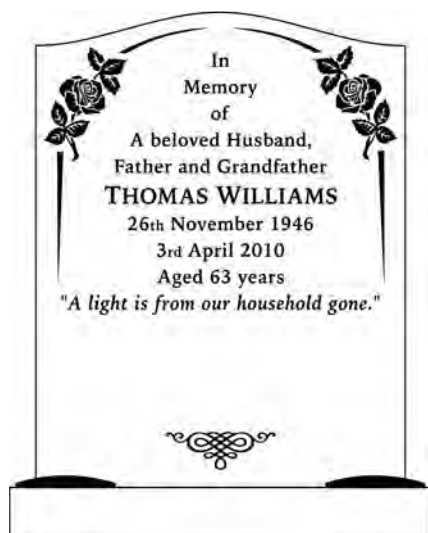
"I was taught to take pride in our workmanship and respect all our Clients as every memorial is a commemoration of a loved one's life. This ethos runs through the memorial team and we are really proud of the attention to detail and the service we provide to all our Clients."

Chris Lodge, Memorials Director

MEMORIALS

When choosing a memorial please remember that you can alter the design to suit your own requirements and create a personal tribute. They are all individually made and most designs can be made in any stone type.

All cemeteries and churchyards have specific regulations with regard to memorials. We can advise on the appropriate style, material and lettering finish accordingly.



LETTERING / LAYOUTS

For new memorials our artists will create a "to scale" proof for you to approve prior to lettering the headstone. This will show any artwork requested and allow the family time to consider fonts, placement and style.

We use sandblast, hand carved and machine carved letters depending on the material we are working with and will advise you of the best option.

MEMORIAL MASONRY

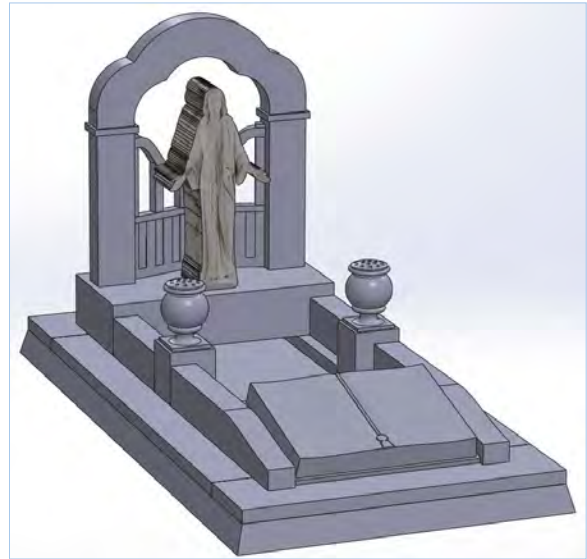


DESIGN SERVICE

Our masonry team aims to provide you with the highest level of service including design, advice, installation and aftercare.

To this effect we use CAD software to create 3D images to bring your ideas to paper before commissioning the design to production.

Please see an example of this in the images to the right and below.



BESPOKE

Many clients personalise a headstone through ornamentation such as carving, sandblasting, etching or photo plaques. We can also supply hand carved, reconstituted and bronze statues, together with ceramic photo plaques.

ADDITIONAL INSCRIPTIONS & RENOVATIONS

Our skilled masons renovate and add inscriptions to existing memorials. At your request we will inspect an existing memorial and provide a free quotation for any remedial work that may be required to bring the memorial back to its original condition.



BEFORE

AFTER

Cressida Lodge 8th generation
with Robert Lodge 7th generation

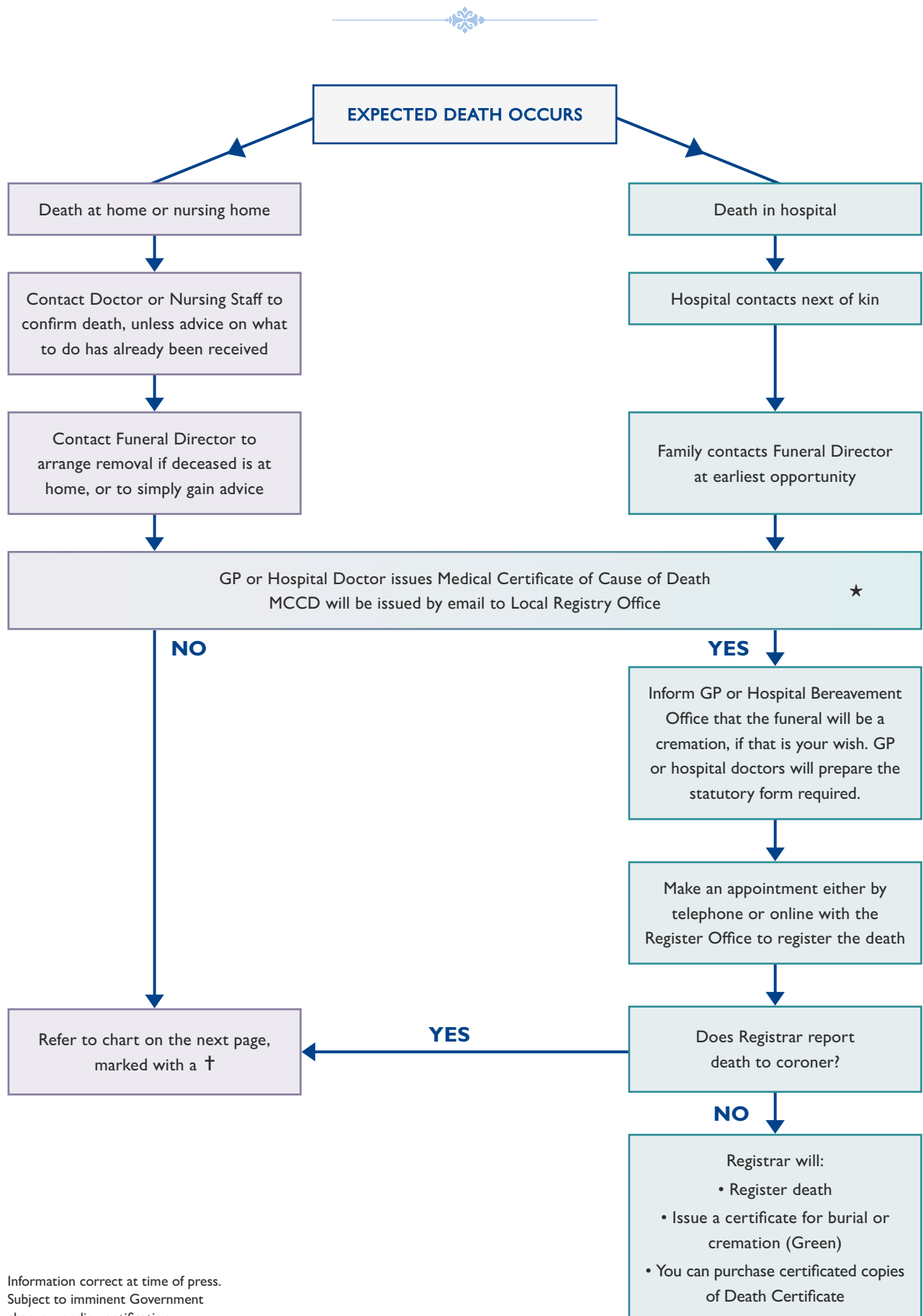


WHAT NEEDS TO BE DONE FOLLOWING A DEATH

Our Funeral Arrangers are there to guide and support you every step of the way. They will cover all elements of the funeral arrangements and will explain all available options in detail. The following section of our Guide contains helpful advice, information and details of third-party companies that may be of interest.

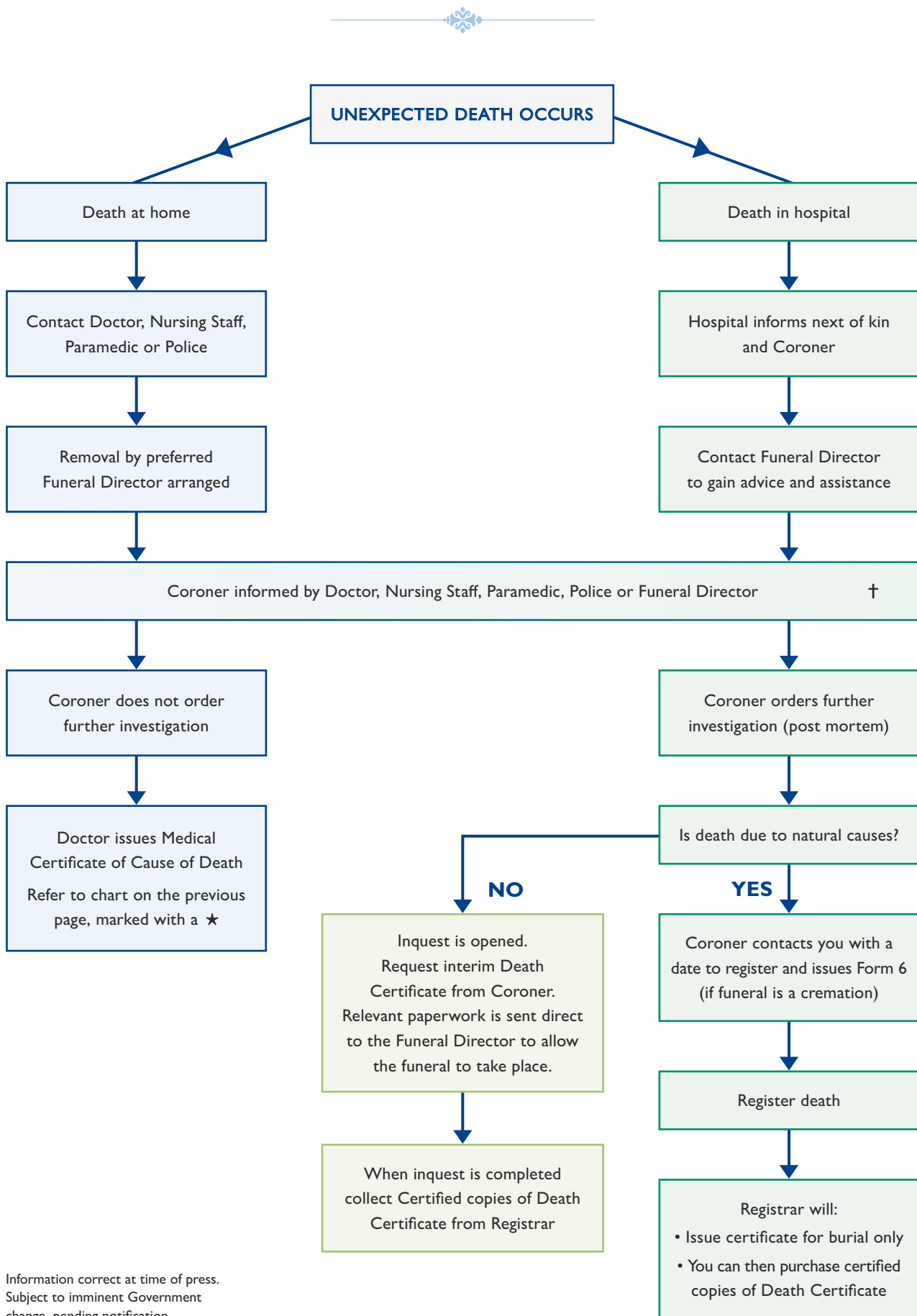


THE PROCEDURE FOLLOWING AN EXPECTED DEATH



Information correct at time of press.
Subject to imminent Government
change, pending notification.

THE PROCEDURE FOLLOWING AN UNEXPECTED DEATH



Information correct at time of press.
Subject to imminent Government change, pending notification.

FOLLOWING A DEATH



AFTER A DEATH

- DEATH AT HOME

- Call a Doctor to request a home visit to confirm the death and determine the cause.
- The Doctor issues a Medical Certificate of Cause of Death.
- If the cause of death cannot be determined, the doctor will refer the death to the Coroner.
- If you are uncertain if someone is dead, call the doctor or 999 for an ambulance.

- DEATH IN A HOSPITAL, HOSPICE OR NURSING HOME

- If not present at time of death, the family will be notified by nursing staff.
- The relevant Doctor issues a Medical Certificate of Cause of Death.
- The deceased's personal possessions will be given to the family.
- The hospital may issue a 'Release Form' to be signed by next of kin, releasing the deceased into the care of the chosen Funeral Director.

- DEATH ELSEWHERE

- If a death occurs away from home, the initial formalities listed above will be carried out by the doctor or hospital staff in that area.
- If the deceased is to be brought home for the funeral, contact the Funeral Director who will make the necessary arrangements in both areas, including transport.

- REGISTERING A DEATH

- The death must be registered WITHIN 5 DAYS at the Register Office for the sub-district in which the death occurred.
- The Medical Certificate of Cause of Death must be given to the Registrar. The death cannot be registered without it.
- If possible, also take the deceased's Medical Card, Birth and Marriage Certificates.
- The person registering the death will need the following information about the deceased:
 - Full name and address (and maiden name if applicable)
 - Date and place of death
 - Date and place of birth
 - Occupation
 - Name, address and date of birth of next of kin
- The 'Death Certificate' (and copies) will be issued by the Registrar on payment of the prescribed fee.
- These Certificates will be needed for obtaining Probate or Letters of Administration, closing bank accounts and making claims on insurance policies.
- The Registrar will issue a green Registrar's Certificate for Burial or Cremation, which will be needed by the Funeral Director.
- The Registrar may issue a white Certificate of Registration of Death - Form 344/BD8 - which is for Social Security purposes to cancel the payment of pensions and allowances from public funds.

Information correct at time of press. Subject to imminent Government change, pending notification.

FOLLOWING A DEATH



‘TELL US ONCE’ SERVICE

Most local councils run a service called ‘Tell Us Once’ - it lets you report a death to most government organisations in one go such as the Passport Office, DVLA and Department for Work and Pensions. Your local Registrar will tell you about it and give you a unique reference number to access the service online or by telephone.

For more information visit www.gov.uk/after-a-death and click on ‘Tell Us Once’.

THE CORONER

The main duties of the Coroner are as follows:

- To investigate all sudden and unexpected deaths.
- To give permission to remove the deceased out of England and Wales.
- Decide what action is necessary following initial investigations of the facts surrounding the death.
- If necessary, arrange a post-mortem examination to establish the cause of death.

IF THERE IS A WILL

- The Executor(s) named in a Will, or the deceased’s personal representative, is responsible for arranging the funeral.
- The Will may give instructions concerning the funeral arrangements but the Executor is not bound by this.
- The Executor is responsible for looking after and subsequently disposing of the deceased’s assets and property.

PROBATE / LETTERS OF ADMINISTRATION

- The Executor(s) must provide ‘proof’ of a Will in order to obtain Probate.
- If there is no Will, the deceased’s personal representative should apply for Letters of Administration.
- A Solicitor may be needed to deal with some, or all aspects of the deceased’s estate.

Our team of Solicitors at Lodge Brothers Legal Services can offer affordable legal advice in relation to Probate, Wills and Lasting Powers of Attorney. Please call **020 3540 6658** or visit www.lodgebrotherslegalservices.co.uk.



TRANSPLANTS

- Organ donation in England is now an ‘opt out’ system. This means that all adults in England will be considered to have agreed to be an organ donor when they die unless they have recorded a decision not to donate or are in one of the excluded groups.
- Your family will still be approached and your faith, beliefs and culture will continue to be respected.
- For more information visit: <https://www.organdonation.nhs.uk/uk-laws/organ-donation-law-in-england/>
- If the deceased wished to donate his or her body for medical research, it is only likely to be accepted if arrangements had been previously made.

ARRANGING THE FUNERAL & ASSOCIATED COSTS



You can be assured that all our staff are trained to the highest levels. Our reputation for providing a professional and personal service of the highest quality has been built on trust and recommendation. We strive to maintain the dignity of the deceased at all times, whilst guiding and assisting the bereaved through every stage of the funeral planning process.

TRANSFER & CARE OF THE DECEASED

- Our trained staff will bring the deceased into our care in a dignified and discreet manner.
- A private ambulance will convey the deceased from a local address or nursing home to our premises at any time of the day or night, or from a hospital during working hours.
- Preparation of the deceased, including dressing them in their own clothes or provision of a suitable gown, as requested.
- Our staff will assist family and friends when visiting our Chapel of Rest / Visiting Room to spend time with the deceased.

EMBALMING

Embalming is a service we offer which is also known as hygienic treatment or temporary preservation. The procedure is carried out for three reasons, which are Preservation, Presentation and Sanitation.

- PRESERVATION

The human body is genetically designed to return back to its basic elements once death has occurred and this process is called decomposition. This is started by the bacteria naturally occurring in the body during life and will continue unless the process of refrigeration and embalming is used. The preservation qualities of the procedure mean that you can visit your loved one on more than one occasion right up to the day of the funeral. Even if you initially feel that you don't want to visit the chapel of rest, during the time approaching the funeral you may change your mind and embalming will give you the opportunity to do that.

- PRESENTATION

Embalming can restore a more natural appearance giving the deceased a peaceful repose. It may also remove some, if not all of the obvious signs of illness or trauma suffered, which may be of great comfort to those suffering from grief. If possible, it is recommended that the Funeral Director is given a recent photograph of the deceased which can be of use for cosmetic purposes. For dressing, and because of possible changes to the condition of the deceased, a long sleeved item of clothing would be preferable with a high neckline and/or scarf to complete the presentation. After death, changes within the body can produce a pale appearance. This is counteracted by adding colouring to the embalming fluid, which restores the natural skin tones. Other fluid can also be used to re-hydrate the body to enhance the appearance further.

- SANITATION

Embalming is necessary for the presentation and sanitation of the deceased. This process also allows the deceased to be touched or hands held whilst receiving visitors without possible risk of transferring pathogens. We would also recommend embalming if the deceased is to be received into church or to be taken home prior to the funeral.

- THE PROCEDURE

The embalming fluid contains amongst other products, a preservative, usually formaldehyde, re-hydrating products, water correctives and dyes. The embalming fluid is delivered to all the tissues necessary via the circulatory system of the person who has died. The process of embalming is not unlike a blood transfusion procedure.

ARRANGING THE FUNERAL & ASSOCIATED COSTS



FUNERAL SERVICES & CEREMONIES

A funeral is the last chance to say goodbye to a loved one and will be a very emotional time. The Funeral Director will carry out all the practical arrangements required to relieve the bereaved of these duties. In the first instance, if you prefer not to visit our branch, our staff will be happy to visit you at home to talk about the arrangements.

Everyone is an individual, and when starting to arrange a funeral, it may be your wish to reflect the life of the deceased throughout the ceremony, by making reference to their hobbies, interests, career or life experiences. This can be achieved in many ways, such as choosing a bespoke or colourful coffin, using a particular colour theme or dress code for the day, selecting specific music and providing photographic displays at the wake. Most aspects of a funeral can be adapted according to your wishes, and our staff will guide you through the process to help you achieve a ceremony that is right for you and the deceased.

- HELP WITH THE COST

Funds for payment of the funeral can normally be released directly from one of the deceased's bank/building society accounts upon production of the invoice and death certificate, providing there are sufficient funds. If there are insufficient funds and the costs are likely to cause financial problems, you may be eligible for help from the State and this should be discussed with our Funeral Arranger as soon as possible.

This will be treated in the strictest confidence. We will advise on the options available to reduce costs and if necessary, claim assistance from the Department of Work and Pensions.

- RELIGIOUS & ETHNIC DIVERSITY & NON-RELIGIOUS CEREMONIES

We offer our services to all communities, regardless of race or religious beliefs.

- We understand the many customs and practices of the various religions, cultural and ethnic heritages.
- We will work with you to fulfill the requirements of your faith.
- Where we can, we will help to provide any religious symbols and adornments required, so the coffin and funeral service can be personalised.
- We can offer advice on the special facilities available, for example the ritual washing and dressing of your loved one.

If you prefer a non-religious service, we can arrange for a Humanist or Civil Celebrant to officiate at the funeral, and a committal without any form of remembrance can also be arranged.

There is normally a Priest, Minister or Non-Religious Officiate who conducts the service on the day of the funeral. He or she will often want to visit you to discover more about the deceased and to listen and offer help and support. They will also be able to make suggestions about a suitable service and other arrangements and will be happy to hear from you at any time you may feel you need someone to talk to.

ARRANGING THE FUNERAL & ASSOCIATED COSTS



- FUNERAL ETIQUETTE

Most funerals are either burials or cremations and the majority of arrangements are made around what is termed a 'traditional' funeral:

- The funeral hearse and limousine arrive at the home of the deceased.
- The relatives are collected and the procession moves on to either a local church for the funeral service and then on to a cemetery or to the crematorium for the committal service.
- After the committal, the relatives are returned to the deceased's home or another local address for the wake.

A simplified version of the arrangements is also available:

- The hearse travels directly to the crematorium or cemetery and meets the relatives there.
- The relatives provide their own transport to and from the crematorium or cemetery.

There are many variations on the 'traditional' or 'simple' funeral, and our staff will be happy to discuss your personal requirements, offering advice on tailoring the funeral accordingly.

- CREMATIONS

The Funeral Director will arrange for the necessary forms to be completed:

- Form 1 - The Application for Cremation, to be signed by an executor or next of kin and contains personal information about the deceased.
- Cremated Remains Instruction Form to be signed as above stipulating if the ashes should be placed in the Garden of Remembrance or removed to elsewhere.

The Funeral Director will arrange for and collect the doctors' forms and pay the appropriate fees for:

- Form 4 - Certificate of Medical Attendant signed by a Registered Medical Practitioner who attended the deceased during their last illness.

If the Coroner has carried out a post mortem then Form 4 is not required. Neither is the Registrar's Certificate for Cremation. Instead, the Coroner issues Cremation Form 6. There is no fee payable.

- BURIALS

The Funeral Director will make all the arrangements for the burial. Burials can take place in:

- A Local Authority cemetery.
- A privately-owned cemetery (for example a Jewish cemetery or burial ground on a family estate).
- A churchyard, although most of these in urban areas are now full.
- An existing family grave, which can be re-opened (for example where a husband and wife wish to be buried together).
- A new grave can be dug with space to allow for one, two or three further interments. This needs to be stipulated at the time of purchase and is subject to availability.
- In cemeteries and churchyards there are different types of grave and we can advise you on the types of graves available and the regulations governing the size and type of memorial allowed.
- Alternatively, the deceased can be buried in a common grave.

Information correct at time of press. Subject to imminent Government change, pending notification.

ARRANGING THE FUNERAL & ASSOCIATED COSTS



All Local Authority and commercially managed cemeteries require an Interment Form, signed by the nearest relative, giving details about the deceased and of the grave to be dug.

The Registrar's Certificate for Burial or Coroner's Order for Burial, must also be delivered to the relevant authority. After burial a Grave Deed will be issued or in the case of re-opening an existing grave, normally amended and returned. Grave Deeds are not issued for burials in churchyards.

THE TRADITIONAL FUNERAL

- SPECIFICATION

A traditional service, which allows for the funeral procession to travel from a residence to the church and then to the crematorium or place of burial. Including use of our private Chapel of Rest for visiting.

- PROFESSIONAL SERVICES

Conducting the funeral of the deceased, including:

Receiving instructions and making necessary arrangements for the funeral including all professional services	£2,025.00
Care of the deceased including temporary preservation (embalming) and use of our private Chapel of Rest	£325.00
Attendance of Funeral Staff (minimum charge)	£870.00
SUBTOTAL	£3,220.00

- VEHICLES

Conveyance of deceased to our premises	£325.00
Motor hearse	£330.00
SUBTOTAL	£655.00

- COFFIN

Supplying a Sherwood coffin	£425.00
TOTAL	£4,300.00

- NOTES

- The time and mileage allowed for staff and vehicles is up to three hours and twenty running miles from our branch.
- As the natural process of decomposition begins immediately after death, any clients wishing to visit their deceased relative or friend in the private Chapel of Rest must agree to the necessary preservation treatment being provided.
- All fees and disbursements are extra to this specification and must be paid before the day of the funeral.
- All accounts are payable within one calendar month of the date of the funeral. Interest will be charged at the rate of 1.5% compounded on any monies outstanding one calendar month after the date of the funeral and every month thereafter.

ARRANGING THE FUNERAL & ASSOCIATED COSTS



THE DIGNIFIED BASIC FUNERAL

We offer a simple funeral service where our professional services are restricted to a minimum and include the following:

- The funeral must take place on a day and a time to suit ourselves and no changes to the arrangements as detailed below are allowed.
- Making arrangements for the funeral, bringing the deceased into our care (normally within 10 miles of the Funeral Director's premises), supply of a hearse only travelling directly to the nearest crematorium or nearest cemetery together with the necessary staff and the provision of a practical and simple coffin..... £3,390.00
- As the natural process of decomposition begins immediately after death and our Chapel of Rest is used by many, we strongly recommend that clients wishing to visit our Chapel allow the necessary preservation process to be carried out. Additional charge for temporary preservation (embalming) and use of the Chapel of Rest £125.00
- All fees and disbursements must be paid in advance of the funeral taking place.
- All accounts are payable within one calendar month of the date of the funeral. Interest will be charged at a rate of 1.5% compounded on any monies outstanding one calendar month after the date of the funeral and every month thereafter.

The Basic Coffin provided with the Dignified Basic Funeral and Standard Unattended Funeral - A simulated mahogany veneered coffin, fitted with two pairs of coloured plastic handles, an inscription plate and the interior lined with white side sheets.



STANDARD UNATTENDED FUNERAL

For those clients who wish to have no funeral service and no-one in attendance, we offer a simple cremation at a local crematorium of our choice. We will take care of all the necessary arrangements in exactly the same professional manner as with our other funerals. Unlike other suppliers, to show our due respect and reverence to the deceased, we will always provide a hearse and four bearers.

Our services include:

- Making all the necessary arrangements and guidance on completing and signing the necessary paperwork.
- Bringing the deceased into our care from anywhere within a 15 mile journey of the Funeral Director's premises.
- The provision of a practical and simple coffin for cremation.
- Provision of a hearse and four bearers.
- Ashes will be returned to your nearest branch or can be scattered at the crematorium without witnessing.
- Once we have taken someone into our care it is not possible to visit the deceased in a chapel of rest. The carrying out of embalming and dressing of the deceased, arranging of floral tributes and collection of charitable donations are not included.
- There will be no procession or limousines and it is not possible for mourners to attend the funeral. The cremation will take place at a crematorium of our choice, without any form of service. You will not be informed of the date, time and location of the service

This list is illustrative and not exhaustive.

We require the total cost to be paid at the time of making the arrangements and in advance of the cremation taking place.

Total cost (Including crematorium fee but excluding fees to Doctors for cremation paperwork if required) £2,515.00

ARRANGING THE FUNERAL & ASSOCIATED COSTS



D.I.Y. FUNERALS

Any item shown in this Price List can be purchased separately by clients wishing to make their own funeral arrangements. With regard to VAT, H.M. Customs and Excise advise us that:

“To qualify for exemption from VAT, the supply of funeral services by an undertaker must include the supply of a coffin and the carriage of the deceased person to a burial ground or a Crematorium... otherwise they are standard rated.”

The current rate of VAT is 20%.

EULOGIES

A eulogy is a speech given at the service in memory of the deceased, usually delivered by a member of the family or a friend and essentially it should capture the essence of the deceased's personality. Here are some simple steps to follow:

- The best eulogies are brief (aim for 3-5minutes) yet specific, thoughtful and not without the occasional touch of humour.
- Decide on the tone and how serious or lighthearted do you want to be. Consider your audience and make sure you don't say anything that would offend, shock, or confuse.
- Briefly introduce yourself; even if most people in the audience know you, just state your name and give a few words that describe your relationship to the deceased.
- State the basic information about the deceased; touch on a few key points, such as what their family life was like, any career achievements, hobbies and interests. Write down the names of the family members especially close to the deceased as you may forget their names on the day, if you're nervous or overwhelmed. Say something specific about the family life of the deceased as this would be very important to the family.
- Use specific references; avoid reciting a list of qualities that the person possesses. Instead, mention a quality and then illustrate it with a story. Ask friends and family beforehand to share ideas with you.
- Be concise and well organised; outline the eulogy before you start writing. Consider all the possible areas; such as personality traits, interests, biographical info. Give the eulogy a beginning, middle and end. Avoid rambling and use common vocabulary.
- Get feedback; ask close friends or family members who knew the deceased well to read it, to make sure that it's accurate, appropriate and captures the essence of the deceased.

- DELIVERING THE EULOGY

- Rehearse; read the draft of your eulogy aloud, preferably to someone else as practice. Words sound different when read aloud than on paper. Rehearsing the eulogy will also help you learn to control your emotions and not get choked up over the speech.
- Have a standby; a close friend or family member who has read the eulogy on stand-by in case you're too emotional to read it.
- Relax; before you speak, calm yourself with a few deep breaths. Have a glass of water to hand.
- Use a conversational tone; talk as if you are talking to friends. Make eye contact. Pause. Go slowly. There's no need to be formal when you're surrounded by loved ones who share your grief.

PRESS NOTICES

We can place press notices for you, a small handling fee may be charged - price dependent on size of obituary.

National newspapers: Average - £415.00 **Local newspapers:** Average - £130.00

ARRANGING THE FUNERAL & ASSOCIATED COSTS



FLOWERS & DONATIONS

If the funeral cortege is to leave from the home address, we recommend that flowers should be sent there. Otherwise they can be sent, by arrangement, to our funeral home. Our staff will be pleased to offer advice on flowers and order the floral arrangements on your behalf. Please see our full range of Floral Tributes from page 22 and on our website.

Alternatively, if required, we can organise the collection of donations to your chosen charities instead of flowers, through our branch or on our website. We provide an online donation page where family and friends can donate and leave messages of condolence. Requesting that flowers be sent to a hospice or nursing home after the funeral can be a generous thought, as they help to brighten the surroundings. If required, our Funeral Director will be happy to arrange this delivery for you.

MUSIC FOR THE SERVICE

Choosing suitable music for the service is an important aspect of the funeral and will help to reflect the deceased's life and allow those attending the funeral service to make a connection with them.

We recommend that three pieces are played – one at the beginning, one at the end of the service, and one to be listened to during the service, as a time for reflection. Consideration needs to be given to the length of time that the service lasts, as you may be restricted by the time allowed in the crematorium chapel.

Adapting the music to compliment the service is important to allow the service to move from sadness to reflection to a slightly lighter mood when the congregation leaves the chapel. Many crematoria have a facility called Obitus or the Wesley Media System, which allows you to listen to and choose from an online music library.

We can also help with providing music for the funeral, by downloading tracks from iTunes which we check prior to the funeral and record on to a CD. If you are providing your own CDs, most crematoria and churches would prefer an original is used to ensure compatibility with the CD players available.

SPECIAL ARRANGEMENTS

We can also provide;

- Complimentary funeral notice, saving £19.99
- Funerals for babies and children.
- Non-ceremonial funerals.
- Saturday and Sunday funerals.
- Additional man hours charged at hourly rate. Normal working hours - £64.00. Outside normal working hours - £96.00.
- Temporary grave markers:
Standard oak wooden cross (inc VAT) - £126.00. Small oak or white wooden cross (inc VAT) - £48.00.
- American, Irish and Italian coffins and caskets.
- Zinc and lead lined coffins.
- Brick graves where permitted by the cemetery authority.
- Repatriation service for transporting overseas.
- Exhumations.

Where prices are not displayed, please ask a member of staff for details.

ARRANGING THE FUNERAL & ASSOCIATED COSTS



DISBURSEMENTS & ADDITIONAL EXPENSES

Third parties, such as the crematorium or cemetery, doctors and the Funeral Officiate, will charge fees which are known as disbursements. These fees will be handled by us as part of the funeral arrangement. All disbursements will need to be paid in advance of the funeral.

FUNERAL FINANCE & FUNERAL SAFE

There are several different options to pay for the funeral with Lodge Brothers and we will always provide you with a fully itemised estimate beforehand. The third-party fees & disbursements will need to be paid within 48 hours of the arrangements being confirmed and the final funeral account invoice must be settled within 30 days of the funeral taking place.

We do appreciate that funerals can be expensive and present very real difficulties to families who have not been able to make prior provision for such expenses – we have therefore provided as many payment options as possible:

1. By cash or by cheque
2. By debit or credit card
3. By bank transfer

4. Payment from the deceased's bank account

If there are sufficient funds within the deceased's bank account, then all payments can be made directly. The benefit of paying via this method is that all such costs are removed from the estate for inheritance tax purposes. Should there not be sufficient funds and a property is required to be sold, then Probate will be required – you can call the Lodge Brothers Legal Services helpline for assistance. In this case, our recommendation would be that you finance the funeral cost via option 6 and when the estate is settled the finance agreement can be paid off.

5. Assistance from the Department of Work and Pensions

You may seek assistance from the Department of Work and Pensions to help pay for a funeral if you are in receipt of certain benefits from them.

6. Funeral Finance from Funeral Safe

Funeral finance is available via an agreement with FCA regulated provider Funeral Safe Funeral Finance – Lodge Brothers Funeral Directors are appointed representatives of Funeral Safe Ltd, independent Funeral Finance Lenders.

How it works: 3 simple steps to apply for your finance through Lodge Brothers Funeral Directors – the finance is not with us. We act as an agent for Funeral Safe. You can apply when arranging the funeral with Lodge Brothers. Just ask our arranger for finance options and they will give you the contact details for Funeral Safe.

Upon a successful application you will receive a text message and email containing your loan agreement. If you are happy with everything in the loan agreement you can accept it via the link in the email. Once you have accepted the agreement we are notified and all that you need do then is make the agreed regular payments of the loan.

Apply Online: Funeral Safe will provide you with a personal account login to manage your finance. Furthermore, they are available to offer any support you may need in regard to the finance and its repayments.

Our funeral finance agreement is very flexible and transparent – should you wish to settle the balance earlier than the agreement states you can do so without penalty and the interest charge will be adjusted to match the payment period.



ARRANGING THE FUNERAL & ASSOCIATED COSTS



OTHER MONEY MATTERS

Dealing with money matters is often the last thing you want to be doing when you have suffered a bereavement. Unfortunately, it is something that has to be addressed and some financial matters are more pressing than others. Time delays can lead to unnecessary complication and costs.

Once the funeral arrangements are attended to, it is advisable to write a list with the following information, which will help organise what needs to be done and who should be contacted:

1. Bank Accounts/Shares/ISAs etc
2. Life Insurance and Assurance Policies
3. Private Pensions/Annuities
4. DWP/State Pension
5. Utility Companies
6. Council Tax
7. Buildings Insurance

The person responsible for dealing with matters of the estate is either the executor of the will, or the next of kin, if there is no will. A solicitor can help with these matters if required, as there can be many pitfalls for the inexperienced layperson. You should always seek professional legal advice to protect against potential claims such as from the DWP if the deceased was in receipt of means tested benefits.

Our Solicitors at Lodge Brothers Legal Services offer free initial legal advice in relation to probate. Please contact one of our team on 020 3540 6658.

A Grant of Probate or Letters of Administration may be required, depending on what matters need to be dealt with. As a guide, it is required if there is:

1. Land or property
2. Money in accounts of over £15,000

Circumstances will dictate and it is often not required on the first death in a couple whose assets are held jointly.

LIFE LEDGER

Life Ledger is a free, easy-to-use service that allows families to contact all the businesses connected with the deceased from a single point, saving time and removing the need to have the same difficult conversation over and over. Life Ledger currently sends notifications to over 700 UK companies across sectors ranging from banks and pension providers to gas, water, telecoms and social media. Only professional users and companies are charged, in order to keep the service free-to-use for families.



For more information on how it works, visit www.lifeledger.com

USEFUL INFORMATION



In the days after the funeral, whilst emotions are settling, there are a number of other services available to help the bereaved. If an Acknowledgement or Notice of Thanks is required in the local newspaper, your Funeral Arranger can place this on your behalf. Pre-printed cards to say 'Thank You' to friends and family for floral tributes and messages of sympathy are available from us, or alternatively, personalised cards can be printed on request.

After a cremation, the crematorium will contact you directly with regards to an entry in the Book of Remembrance. If a memorial is required after a burial, please request a copy of our full masonry collection.

Once the final formalities of the funeral are dealt with, there may be other duties to attend to. The following pages offer a guide to what may need to be considered, and suggested third party information that may help with the bereavement process.

If you require advice in relation to probate, our Solicitors at Lodge Brothers Legal Services will be able to assist. Please contact Sophie Andrews, our Head of Legal Services, or one of her team on **020 3540 6658**.

CHECKLIST OF OTHER DUTIES

After a death there may be other duties to attend to such as:

- CLAIMING FUNDS FROM:

Banks, Building Societies, Girobank, Insurance Policies, Premium Bonds, etc. Obtaining help and assistance with grants and allowances from the DWP and Local Authorities.

- AMENDING PAYMENTS BEING MADE FOR:

Council Tax, Credit Cards, Direct Debits, Standing Orders, Hire Purchase, Rental Agreements, Insurance Policies, etc.

- CHANGES OF NAME FOR:

Car ownership, Building and Household Contents Insurance, Electricity, Gas, Water, Telephone Services, TV Licence, etc.

- NOTIFICATION OF DEATH TO:

Family Doctor if death occurred away from home, Chiroprapist, Dentist, Hospital, Optician as well as Employer, Clubs, Associations, Professional Organisations, Inland Revenue, Passport Office, etc.

Return of equipment or cancellation of services supplied by St. John's Ambulance, Red Cross, DWP etc.

This is not a fully comprehensive list, but we hope it will help you to put your personal affairs in good order.

BEREAVEMENT REGISTER

By registering with The Bereavement Register, you can remove the names and addresses of the deceased from telemarketing databases and mailing lists. The amount of unsolicited direct mail sent to the deceased will reduce within four to six weeks, leading to virtually nothing within six months. Should you continue to receive unwanted mail, please forward the items to the Freepost address below and the companies will be contacted directly on your behalf.

This service is intended to stop direct mail addressed to the deceased, however, if you would like to stop your own personal unsolicited mail or telemarketing, please contact the Direct Marketing Association on 0845 703 4599.

The Bereavement Register, Freepost, Sevenoaks, Kent TN13 1YR

Telephone: 01732 467940

Website: www.thebereavementregister.org.uk

USEFUL INFORMATION



BEREAVEMENT HELP & COUNSELLING

Grief is individual, and human reactions are variable. Unfortunately, it is an experience most of us will suffer at some point in time. Even if a death is expected, the feeling of shock can be surprisingly strong. If the death is unexpected, then it can feel impossible to believe that it is real. You may feel completely detached from reality with events unfolding around you in a surreal way. Often, it can be the case that the person to whom we would normally turn, is the person who has died and that can make the sadness and isolation feel even more acute.

If this is a difficult time for you, please don't struggle on your own. Many people who are bereaved benefit from counselling. There are people willing to listen who will understand your feelings and help you through the grieving process. Our staff will put you in touch with local help, which is often free or available for a modest charity donation. The following organisations offer help and support to those experiencing grief.

CRUSE BEREAVEMENT SUPPORT

Offering support, advice and information to children, young people and adults when someone dies and working to enhance society's care of bereaved people.

National Day by Day Helpline (Monday-Friday, 9.30am-5pm): 0808 808 1677
www.cruse.org.uk



THE SAMARITANS

A safe place for you to talk, any time you like, in your own way about whatever's getting to you. It doesn't matter who you are, how you feel, or what has happened. If you feel that things are getting to you, get in touch - whatever you're going through, we'll go through it with you.

Helpline: 116 123 www.samaritans.org



SANDS - STILLBIRTH AND NEONATAL DEATH SOCIETY

Supporting anyone affected by the death of a baby, working to improve the care bereaved parents receive and promoting research to reduce the loss of babies' lives.

Head Office: 0808 164 3332 (Will advise of local contact) www.sands.org.uk



THE COMPASSIONATE FRIENDS

A charitable organisation of bereaved parents, siblings and grandparents dedicated to the support and care of other similarly bereaved family members who have suffered the death of a child or children of any age and from any cause.

Helpline: 0345 123 2304 www.tcf.org.uk



WINSTON'S WISH

Supporting bereaved children since 1992, providing specialist child bereavement support services across the UK, including in-depth therapeutic help in individual, group and residential settings.

Helpline: 0808 802 0021 www.winstonswish.org



THE TOMORROW PROJECT

A confidential suicide prevention project set up to support individuals and communities to prevent suicide. The Project currently delivers a suicide crisis service and a police-referral suicide bereavement service.

www.tomorrowproject.org.uk



USEFUL INFORMATION



CHARITABLE DONATIONS

Often, families like to name a charity to which friends and family may make donations in memory of their loved one. Through our website we are able to facilitate and co-ordinate this as part of our service, providing a sympathetic, easy and secure means for families, loved ones and friends to pay tribute, leave condolence messages and donate to a charity in memory of the deceased.

The online facility also allows us to easily collect Gift Aid where possible, thus boosting the value of donations by 25%.

We can also receive cheques payable to the charity or cash collections at the funeral service itself. Gift Aid can only be collected in these instances if the donor clearly states their wish to claim, and provides their full address.

The screenshot shows the 'IN MEMORY OF TINA BROWN' page. It features a navigation bar with options like HOME, FUNERAL INFORMATION, and ONLINE DONATIONS. The main content includes a photo of Tina Brown, her obituary text, and a list of beneficiaries: FLORENCE NIGHTINGALE HOSPICE CHARITY (£100.00) and THE ROYAL NATIONAL LIFEBOAT INSTITUTION (£50.00). There are also tributes from Chris and Sue (£50.00) and Paul Brown (£100.00). A 'Make a donation in memory of Tina Brown' button is prominently displayed.

ONLINE MEMORIALS

Our Online Memorial pages allow family and friends to honour and remember someone who has passed away. A dedicated page can be created in the name of the deceased, giving the details of the funeral arrangements and providing an opportunity for the bereaved to add condolence messages, share personal memories through images, music, videos and links, see donation details and view any press notices that have been published.

If a Charitable Donation account has been set up online, this can be accessed via the Online Memorial page.

USEFUL INFORMATION



USEFUL THIRD PARTY CONTACTS

- PATIENT AFFAIRS OFFICES

Ashford Hospital	01932 723553	Charing Cross Hospital	020 3311 1234
Chelsea & Westminster Hospital	020 3315 8650	Ealing Hospital	020 8967 5367
Epsom General Hospital	01372 735735	Frimley Park Hospital	030 0614 5000
Hammersmith Hospital	020 8383 3075	Heatherwood Hospital, Ascot	01753 576430
Hillingdon Hospital	01895 279354	Kingston Hospital	020 8934 3355
Mount Vernon Hospital	020 3826 2343	Northwick Park Hospital	020 8869 2966
Princess Margaret Hospital, Windsor	01753 743434	Royal Surrey Hospital	01483 303361
St Mary's Hospital, Paddington	020 3312 3325	St Peter's Hospital, Chertsey	01932 723553
West Middlesex Hospital	020 8321 6261	Woking Community Hospital	01483 846433

- CORONERS' OFFICES

West London Coroner's Court	25 Bagleys Lane, FULHAM, London SW6 2QA	020 8753 6800
Westminster Coroner's Court	33 Tachbrook Street, WESTMINSTER, London SW1V 2JR	020 7641 1212
Windsor and Maidenhead	Reading Town Hall, Blagrove Street, READING, Berkshire RG1 1QH	01189 372300
Woking and Guildford	Station Approach, WOKING, Surrey GU22 7AP	01483 404530

USEFUL INFORMATION



- REGISTER OFFICES

BRACKNELL	Times Square, Market Street, Bracknell, Berkshire RG12 1JD	01344 352000
CAMDEN	Town Hall, Judd Street, Camden, London WC1H 9JE	020 7974 4444
CHELSEA	Old Town Hall, Kings Road, Chelsea, London SW3 5EE	020 7361 4100
EALING	Town Hall, New Broadway, Ealing, London W5 2BY	020 8825 7272
FRIMLEY	The Absolute Building, Lyon Way, Frimley, Surrey GU16 7ER	0300 200 1002
GUILDFORD	Artington House, 42 Portsmouth Road, Guildford, Surrey GU2 4DZ	0300 200 1002
HAMMERSMITH	Clockwork Building, 45 Beavor Lane, Hammersmith, London W6 9AR	020 8753 2140
HARROW	Civic Centre, Station Road, Harrow, Middlesex HA1 2XY	020 8901 2665
HOUNSLOW	Feltham Lodge, Harlington Road West, Feltham, Middlesex TW14 0JJ	020 8583 2090
KINGSTON UPON THAMES	Bereavement Office, Kingston Cemetery & Crematorium, Bonner Hill Road, Kingston KT1 3EZ	020 8547 5000
LEATHERHEAD	The Mansion, 70 Church Street, Leatherhead, Surrey KT22 8DP	0300 200 1002
WINDSOR AND MAIDENHEAD	Town Hall, St. Ives Road, Maidenhead, Berkshire SL6 1RF	01628 796422
SLOUGH	Register Office, The Curve, William Street, Slough SL1 1XY	01753 787600
TWICKENHAM	York House, Richmond Road, Twickenham, Middlesex TW1 3AA	020 8891 7188
UXBRIDGE	The Civic Centre, High Street, Uxbridge, Middlesex UB8 1UW	01895 250418
WANDSWORTH	Town Hall, High Street, Wandsworth, London SW18 2PU	020 8871 6120
WEMBLEY	Brent Civic Centre, Engineers Way, Wembley, London HA9 0FT	020 8937 1010
WESTMINSTER	Registrars Office, 317 Harrow Road, Westminster, London W9 3RJ	020 7641 1161
WEYBRIDGE	Rylston, 81 Oatlands Drive, Weybridge, Surrey KT13 9LN	0300 200 1002

- PROBATE & LETTERS OF ADMINISTRATION

PRINCIPAL REGISTRY OF FAMILY DIVISION

www.gov.uk/wills-probate-inheritance

Probate Office, First Avenue House, 42/49 HIGH HOLBORN, London WC1V 6NP

020 7421 8509

DEPARTMENT FOR WORK & PENSIONS

www.gov.uk/government/organisations/department-for-work-pensions

Caxton House, Tothill Street, WESTMINSTER, London SW1H 9NA

For your nearest office please call: 0345 606 0265

CITIZENS ADVICE BUREAU

www.citizensadvice.org.uk

03444 111444

ASSOCIATED ORGANISATIONS



NATIONAL ASSOCIATION OF FUNERAL DIRECTORS

Founded in 1905 to represent the interests of Funeral Directors and the bereaved throughout the country. The NAFD monitors the standards of both the facilities and the services provided by their members. John Lodge was National President 1989-1990.



The Funeral Director Code

The Funeral Director Code is founded on the fundamental principle that, by virtue of their membership, category a) funeral business members of the NAFD agree to operate their business in a professional manner and to be responsible for the actions and decisions of their employees. The Code sets out the high level of service that clients may expect in their dealings with a member of the Association, and members are now monitored by the Independent Funeral Standards the NAFD. At Lodge Brothers, we adhere to The Funeral Director Code. A full copy of these principles is available in all of our branches and can be emailed or posted upon request. Correspondence should be addressed to: National Association of Funeral Directors, 618 Warwick Road, Solihull, West Midlands, B91 1AA. www.nafd.org.uk

NAFD RESOLVE

Provided for the benefit of clients of NAFD members. In the event of problems with the provision of the funeral service by a member, clients have access to this arbitration scheme free of charge, which offers unbiased resolution of any complaints.



LONDON ASSOCIATION OF FUNERAL DIRECTORS

Founded in 1905 to represent the interests of Funeral Directors and the bereaved in the London area. John Lodge was President in 1982-1983 and Robert Lodge (the current Chairman of Lodge Brothers) was President for two consecutive terms of office from 2003-2004 and 2004-2005.



NATIONAL ASSOCIATION OF MEMORIAL MASONS

Founded over 100 years ago to support and promote the interests of member companies, and safeguard the bereaved through the promotion of high standards, wide choice and increased understanding in all matters relating to natural stone memorials.



BRITISH REGISTER OF ACCREDITED MEMORIAL MASONS

Set up in 2004 with the aim of establishing a network of nationally accredited businesses and registered fixers that would adhere to a recognized uniform standard of workmanship.



COUTTS PRIZE FOR FAMILY BUSINESS

The Coutts Prize for Family Business recognises the best-run family business in England & Wales, and compliments Coutts successful Family Business Forum that is held throughout the UK. Lodge Brothers were named 'Best UK Family Business, South Region 2005'.



PAYMENT POLICY AND TERMS & CONDITIONS



We are a member of the National Association of Funeral Directors and subscribe to their current Funeral Director Code, a copy of which is available upon request. We aim to act in a professional manner and provide a courteous, sensitive and dignified service to you.

ESTIMATES & EXPENSES

Our estimate is an indication of the charges likely to be incurred on the basis of the information and details we know at the date of estimate, errors and omissions excepted. While we make every effort to ensure the accuracy of the estimate, the charges can be liable to alteration, particularly in instances where third parties change their rates or charges. We may not know the amount of third party charges in advance of the funeral, however we will give you a best estimate of such charges on the written estimate. The actual amount of the charges will be detailed and shown in the final account.

If you amend your instructions, we will require your confirmation of the changes. We may need to make an extra charge in accordance with prices published in our current price list. We will add VAT to our charges where applicable and at the current rate at the time of raising the invoice. However, in most cases, VAT is not chargeable on funeral services.

PAYMENT ARRANGEMENTS

The funeral account is due for payment within 30 days of the funeral, unless otherwise agreed by us in writing. Our account will usually be dated the date of the funeral. We may request payment for certain charges in advance of the funeral, as specified at the time of arrangement. If the client resides outside of the UK we require full payment in advance of the funeral.

If you fail to pay us in full on the due date we may charge you interest:

- At the rate of 1.5% compound on any monies outstanding one calendar month after the date of the funeral and every calendar month thereafter.
- Before and after any judgment (unless a court orders otherwise).

We may recover (under clause 3 of our Terms & Conditions) the cost of taking legal action to enforce payment of any outstanding amounts owed to us.

CHALLENGES TO YOUR ENTITLEMENT TO MAKE FUNERAL ARRANGEMENTS

We enter into arrangements with clients in good faith, on the basis that they are entitled to make the relevant funeral arrangements. In circumstances where our client's entitlement is called into question by a third party, we will allow the third-party reasonable time to seek legal advice on their position. What is reasonable will depend on the circumstances but will be unlikely to exceed one week.

If at any time it becomes clear that our client did not have, or willfully misled us in relation to, their entitlement to arrange the funeral, we reserve the right to terminate our contractual relationship with them.

PAYMENT POLICY AND TERMS & CONDITIONS



DISPUTES IN RELATION TO ASHES IN OUR CARE

Where a dispute over entitlement to collect cremated remains arises between our client and a third party, we will release the deceased person's cremated remains to our client, unless we become aware of facts that call into question whether our client was entitled to make the funeral arrangements.

In circumstances where our client's entitlement is called into question, we will allow the third-party reasonable time to seek legal advice on their position before releasing the ashes to our client. What is reasonable will depend on the circumstances but will be unlikely to exceed four weeks. If at any time it becomes clear that our client did not have, or willfully misled us in relation to, their entitlement to arrange the funeral, we reserve the right to release the ashes to the cremation applicant or other person whom we deem appropriate.

INDEMNITY

You are to indemnify us in full and hold us harmless from all expenses and liabilities we may incur (directly or indirectly including financing costs and including legal costs on a full indemnity basis) following any breach by you of any of your obligations under these terms. This means that you are liable to us for losses we incur because you do not comply with these terms, for example we may charge you an administration fee where we receive a cheque from you which is subsequently not honoured or if we write to remind you that an account is overdue.

If we instruct debt collection agents we may also recover the fees we incur from you. Further details regarding these fees are available on request. We may claim those losses from you at any time and if we have to take legal action we will ask the court to make you pay our legal costs.

DATA PROTECTION AND GDPR

We respect the confidential nature of the information given to us, and where you provide us with personal data ("data") we will ensure that the data will be held securely, in confidence and lawfully processed for the purpose of carrying out our services in accordance with our contract with you. In order to provide our services we may need to pass such data to third parties and those third parties, who are performing some of the services for you, may contact you directly.

Under the General Data Protection Regulation (GDPR) (EU 2016/679) you have the right to know what data we hold on you and can, upon applying to us in writing, receive copies of that data. Data will not be kept longer than is necessary for the purpose of carrying out our services. There are more details in the Privacy Notice, a copy of which is available on request or can be downloaded from the Lodge Brothers website.

TERMINATION

We reserve the right to terminate our services if you fail to honour your obligations under these terms. We are under no obligation to accept your termination until we receive your instruction in writing. If you terminate your instructions or if we decide to terminate our services, you will be invoiced for all third party charges which we have paid or are committed to. You will also have to pay our charges and expenses according to the scale set out below:

Termination within 2 days of due date for performing services	100%
Termination within 1 week of due date for performing services	80%
Termination within 2 weeks of due date for performing services	50%

PAYMENT POLICY AND TERMS & CONDITIONS



CONDUCT

The Funeral Director Code requires that we provide a high quality service in all aspects. We wish all of our customers to be pleased with our service, however, if for any reason you are dissatisfied please contact Christopher Lodge, Director, at our head office address of Lodge Brothers (Funerals) Ltd, Ludlow House, Ludlow Road, Feltham, Middlesex TW13 7JF, and he will be pleased to assist you. A more formalised complaints procedure is available on request from any of our branches. All dates and times provided on the estimate cannot be guaranteed until final booking is made and confirmed.

Although we endeavour to provide a prompt and efficient service for you, there may be instances where, because of circumstances beyond our control, we are unable to fulfil our obligations to you on the date or time specified. Where this is the case we will attempt to contact you in advance, using the details you have provided to us, and advise you of alternative arrangements.

THIRD PARTY PROVIDERS

Some of the funeral services will be provided by third parties (including but not limited to Local Authority crematoria and cemeteries, private crematoria and cemeteries, churches (some may be recommended by us but some may be recommended by the Church), organists, grave diggers, ministers and celebrants, soloists and choirs) whom you will have chosen without recommendation from us.

Whilst we cannot accept responsibility for any acts or omissions by such third parties we will provide you with reasonable assistance in resolving any complaint you may have against such third parties. We do not endorse, sponsor or recommend any such third parties and to the fullest extent permitted by law, we do not accept or assume responsibility for the actions or omissions of third party service providers.

AGREEMENT

Your continuing instructions will amount to your continuing acceptance of these terms of business. Any waiver or variation of these terms is binding in honour only unless:

- made (or recorded) in writing;
- signed by one of our directors; and
- expressly stating an intention to vary these terms.

Your instructions will not create any right enforceable (by virtue of the Contracts Rights of Third Parties Act 1999) by any person not identified as our client. If any of these terms are unenforceable as drafted;

- it will not affect the enforceability of any other of these terms; and
- if it would be enforceable if amended, it will be treated as so amended.

Nothing in these terms restricts or limits our liability for death or personal injury. English law is applicable to any contract made under these terms. The English and Welsh courts have non-exclusive jurisdiction.

NOTES



A series of horizontal dotted lines spanning the width of the page, intended for handwritten notes.

Make it easier for your loved ones

PLAN AHEAD WITH A PERSONALISED FUNERAL PLAN



Our Funeral Plans let you arrange and make financial provision for your own funeral in advance. Your personal wishes will be recorded, reducing the worry for your loved ones.

Our friendly Funeral Planning Team can answer any questions you may have, please give us a call on 020 3540 6660.

Terms and conditions apply - please ask us for a copy.

Lodge Brothers, Ludlow House, Ludlow Road, Feltham, Middlesex TW13 7JF Reg. No. 832976 is an Appointed Representative of Ecclesiastical Planning Services Limited Reg. No. 2644860, registered in England at Benefact House, 2000 Pioneer Avenue, Gloucester Business Park, Brockworth, Gloucester, GL3 4AW, UK, which is authorised and regulated by the Financial Conduct Authority. Firm Reference Number 958152.

LODGE BROTHERS BRANCHES

ADDLESTONE	104 Station Road	01932 829929
ASCOT	32 High Street	01344 537033
ASHFORD	23 Church Road	01784 252226
BEDFONT	420 Staines Road	020 8890 7902
BRENTFORD	44/45 Half Acre	020 8560 7499
BURPHAM	204 London Road	01483 615031
BYFLEET	Amptwade House, 50 High Road	01932 345037
CHERTSEY	7 Windsor Street	01932 565980
CHOBHAM	3 Bagshot Road	01276 543489
COBHAM	3 Hollyhedge Road	01932 450360
DATCHET	5 High Street	01753 314969
DEDWORTH	67 Dedworth Road	01753 968893
EALING	72 Northfield Avenue	020 8567 0227
EAST MOLESEY	156 Walton Road	020 8941 1412
EGHAM	219 Pooley Green Road	01784 770464
ENGLEFIELD GREEN	32 St Jude's Road	01784 433692
ESHER	78 High Street	01372 463903
FELTHAM	108 High Street	020 8890 2231
GUILDFORD	70 Woodbridge Road	01483 562780
HAM	426 Richmond Road	020 8090 1685
HAMPTON HILL	49 High Street	020 8941 4022
HANWORTH	13 Market Parade, Hampton Road West	020 8894 9731
HILLINGDON	1 Whiteleys Parade, Uxbridge Road	01895 272634
HOUNSLOW	116 Hanworth Road	020 8570 0118
ISLEWORTH	1-2 The Pavement, South Street	020 8194 9510
LANGLEY	3 Clayton Parade, High Street	01753 780077
LIGHTWATER	7 The Square, 51-55 Guildford Road	01276 588107
NEW MALDEN	26 Coombe Road	020 8075 6112
NORTHOLT	48-50 Church Road	020 8845 0660
ROEHAMPTON	15 Roehampton High Street	020 8016 5651
RUISLIP	14 New Pond Parade, West End Road	01895 621034
SHEPPERTON	7 Green Lane	01932 220081
SUNBURY	3-5 The Parade, Staines Road West	01932 785402
SUNNINGDALE	7 Broomhall Buildings, Chobham Road	01344 537032
SURBITON	50-52 Brighton Road	020 8546 3504
THAMES DITTON	37 High Street	020 8398 4586
TWICKENHAM	55 King Street Parade	020 8166 8705
WALTON ON THAMES	65 High Street	01932 250312
WEST BYFLEET	33 Old Woking Road	01932 355897
WEYBRIDGE	36-38 High Street	01932 854758
WINDSOR	47 St Leonards Road	01753 831400
WOKING	48-54 Goldsworth Road	01483 768942
YIEWSLEY	30 High Street	01895 446686

LODGE BROTHERS HEAD OFFICE

Ludlow House, Ludlow Road, Feltham Middlesex TW13 7JF

020 8818 7710

www.lodgebrothers.co.uk



All information and prices included within this brochure were correct at time of going to press. Date: April 2024.